



**GLOBAL
ENERGY
METALS
CORP.**

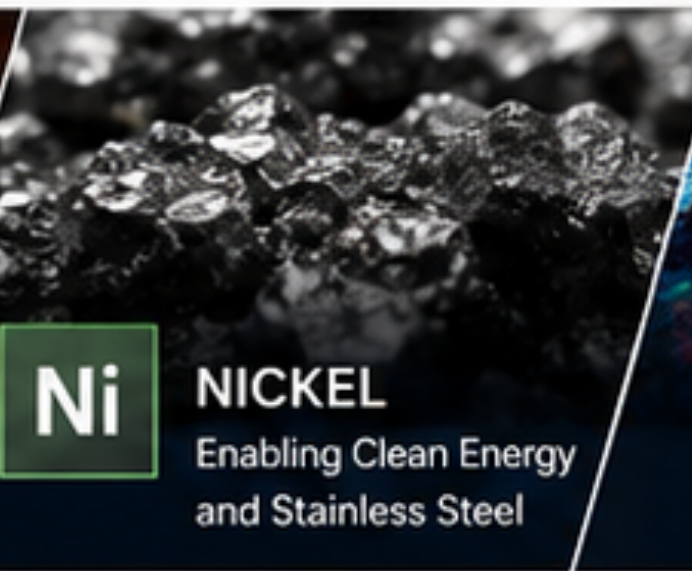
EXPOSURE TO THE NEW ENERGY ECONOMY

A DIVERSIFIED CRITICAL MINERALS PLATFORM

ADVANCING ASSETS. CREATING VALUE. BUILDING TOMORROW.



Cu **COPPER**
Powering the Grid
Connecting the World



Ni **NICKEL**
Enabling Clean Energy
and Stainless Steel



Co **COBALT**
Powering Batteries
Empowering Innovation



Li **LITHIUM**
Energizing Mobility
Powering the Future



U **URANIUM**
Reliable. Clean.
Essential.



C **GRAPHITE**
Powering Batteries
and Advanced Tech




Ag **SILVER**
Critical for Industry
and Technology

A GLOBAL PORTFOLIO
of Critical Minerals Assets
in **Tier-1** Jurisdictions




 USA



 NORWAY



 AUSTRALIA



 CANADA



DIVERSIFIED EXPOSURE
Multiple Commodities & Jurisdictions



VALUE CREATION
Projects, Royalties & Strategic Investments



STRATEGIC PARTNERSHIPS
Aligning with Industry Leaders



SUSTAINABLE FUTURE
Responsible Development

TSXV: **GEMC**

OTC: **GBLEF**

www.globalenergymetals.com

FORWARD LOOKING STATEMENT



The information contained in this presentation is provided solely for the reader's general knowledge. The information is not intended to be a comprehensive review of all matters and developments concerning Global Energy Metals Corp. All information is offered on a "best intentions" basis. No securities commission or other regulatory authority in Canada or any other country or jurisdiction has in any way passed upon this information and no representation or warranty is made by Global Energy Metals Corp. to that effect. Global Energy Metals Corp. is not responsible for the content of sites that can be reached through links on this site.

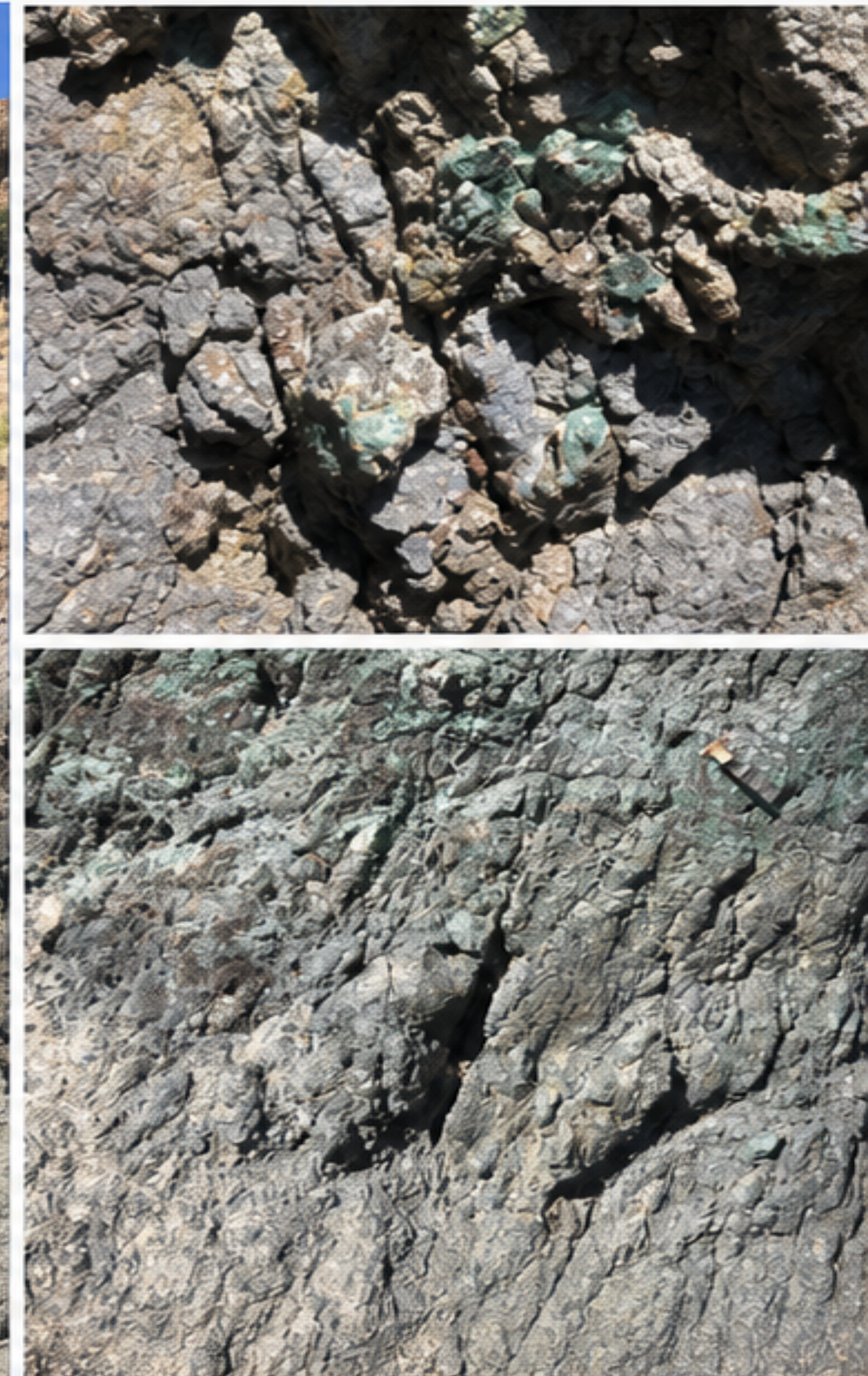
This presentation may include "forward looking statements". All statements, other than statements of historical fact, included herein, including without limitation, statements regarding exploration results, future plans and objectives of Global Energy Metals Corp. are forward looking statements that involve risks and uncertainties. There can be no assurance that such statements will prove to be accurate and actual results and future events could differ materially from those anticipated in such statements.

Global Energy Metals Corp. does not make any representations, warranties or guarantees, express or implied, regarding the accuracy, completeness, timeliness, non-infringement, or merchantability or fitness for a particular purpose or use of any information contained in this presentation or of any information available on web sites that are accessible by links found on this site. Furthermore, the information in no way should be construed or interpreted as, or as a part of, an offering or solicitation of securities. Investors are advised to discuss all of their stock purchases with a registered securities broker or personal finance professional prior to investing. No obligation, responsibility or liability shall be incurred by Global Energy Metals Corp. or any of its officers, directors, employees or agents for any loss or damage whatsoever, whether incidental, special, indirect, consequential, punitive, exemplary, or for lost profits in connection with, caused by or arising from any delays, inaccuracies, errors or omissions in or infringement by, or from any use of, or reliance on such information available on this web site, the links to other sites contained in this presentation nor any information available on such sites.



QUALIFIED PERSON

Mr. Paul Sarjeant, P. Geo., is the qualified person for this release as defined by National Instrument 43-101 - Standards of Disclosure for Mineral Projects.



EXECUTIVE INVESTMENT THESIS



**GLOBAL
ENERGY
METALS
CORP.**

A DIVERSIFIED CRITICAL MINERALS PLATFORM POSITIONED FOR LONG-TERM VALUE CREATION

Global Energy Metals Corp. (TSXV: GEMC | OTC: GBLEF) is a diversified critical minerals company with a global portfolio of copper, nickel, cobalt, lithium, uranium, graphite and silver, strategic investments and royalties across Tier-1 jurisdictions. We advance and partner to unlock value, generate returns and deliver long-term shareholder growth.

OUR EXPOSURE

Cu COPPER Powering the Grid	Ni NICKEL Enabling Clean Energy	Co COBALT Powering Batteries	Li LITHIUM Energizing Mobility	U URANIUM Reliable. Clean. Essential.	C GRAPHITE Advanced Materials	Ag SILVER Critical for Industry and Technology
--	--	---	---	--	--	---

PORTFOLIO HIGHLIGHTS

 6+ ADVANCED ASSETS Across 5 Countries	 TIER-1 JURISDICTIONS Low Risk, High Quality	 STRATEGIC PARTNERSHIPS Unlocking Value Together	 MULTIPLE PATHS TO VALUE Projects, Royalties, Investments	 SUSTAINABLE BY DESIGN Responsible Development
--	--	--	---	--



OUR MISSION:
To be a leading critical minerals company that creates enduring value through discovery, partnership and responsible development.

OUR VISION:
Powering the future through responsible supply of the world's essential minerals.

CRITICAL MINERALS AT THE CENTER OF GLOBAL INDUSTRIAL POLICY



The energy transition, digital revolution, and geopolitical realignment are driving unprecedented demand for critical minerals. Supply constraints and strategic dependencies are accelerating investments, policy support and long-term price strength.

AI INFRASTRUCTURE

Surging demand for data centers powering the AI revolution requires massive minerals intensity.

GRID EXPANSION

Aging grids and renewable integration require significant minerals for build-out and upgrades.

EV ADOPTION

Electrification of transport is driving structural demand for battery and copper-intensive minerals.

DEFENSE APPLICATIONS

Advanced defense systems require secure and reliable access to critical mineral inputs.

ENERGY STORAGE

Battery storage solutions are essential for energy security and decarbonization.

LIVE COMMODITY PRICING DASHBOARD

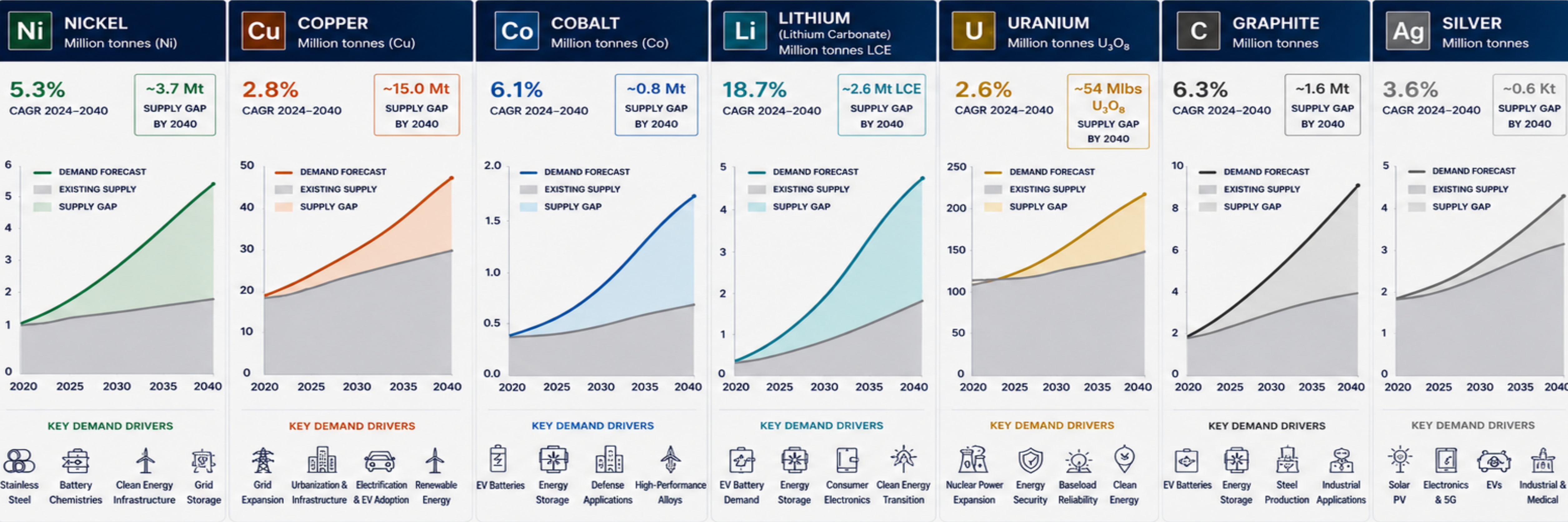
Real-time pricing reflects strong fundamentals and long-term demand outlook.

Source: TradingView | Prices as of May 09, 2025



THE SUPPLY GAP OPPORTUNITY

Critical mineral demand is accelerating across electrification, infrastructure, and energy security. Structural undersupply in key commodities creates a multi-decade opportunity.



Across these seven critical minerals, demand is forecast to outpace supply by meaningful margins, creating a **persistent supply gap and compelling long-term investment opportunity.**

Sources: **iea** International Energy Agency

BENCHMARK MINERAL INTELLIGENCE

Fastmarkets

S&P Global

CONSOLIDATE. PARTNER. INVEST.

GEMC's disciplined business model targets undervalued critical mineral assets in Tier-1 jurisdictions, advances them to de-risk and value inflection, partners with the right operators, monetizes, and recycles capital into the next opportunity.



**GLOBAL
ENERGY
METALS
CORP.**

OUR BUSINESS MODEL: DRIVING VALUE ACROSS THE CRITICAL MINERAL VALUE CHAIN



DISCIPLINED CAPITAL ALLOCATION
Consistent value creation through cycle-tested execution



GLOBAL CRITICAL MINERALS PLATFORM



Diversified exposure to critical mineral supply chains across Tier-1 jurisdictions through projects, strategic partnerships and investments.

DIVERSIFIED EXPOSURE

PORTFOLIO AT-A-GLANCE

<p>7</p> <p>PROJECTS & STRATEGIC INVESTMENTS</p>	<p>5</p> <p>TIER-1 JURISDICTIONS</p>	<p>8</p> <p>CRITICAL COMMODITIES</p>	<p>6</p> <p>STRATEGIC PARTNERS</p>
---	---	---	---





PROJECT	COMMODITY EXPOSURE	LOCATION	STRATEGIC PARTNER	VALUE DRIVER
LOVELOCK & TREASURE BOX PROJECTS	Cu Co Ni	NEVADA, USA	DIRECT OWNERSHIP	U.S. BATTERY METALS EXPOSURE
RÅNA PROJECT	Ni Cu Co	NARVIK, NORWAY	KINGSROSE MINING + METALS ONE plc	EUROPEAN NICKEL OPTIONALITY
MILLENNIUM PROJECT	Cu Co C	QUEENSLAND, AUSTRALIA	METAL BANK LIMITED	NEAR-TERM DEVELOPMENT
MT. ISA PROJECTS	Cu Co C	QUEENSLAND, AUSTRALIA	HAMMER METALS LTD.	EXPLORATION UPSIDE
MONUMENT PEAK	Cu Ag Au	IDAHO, USA	GROUNDED DAHROUGE GEOLOGICAL	ROYALTY MONETIZATION
PEACE RIVER PROJECT	Li (BRINE)	ALBERTA, CANADA	NEOLITHICA LTD.	STRATEGIC LITHIUM EXPOSURE
ATHABASCA URANIUM PROJECTS	U REE	SASKATCHEWAN, CANADA	TERRANORTH RESOURCES	ENERGY SECURITY THEME

COMMODITY EXPOSURE SPECTRUM


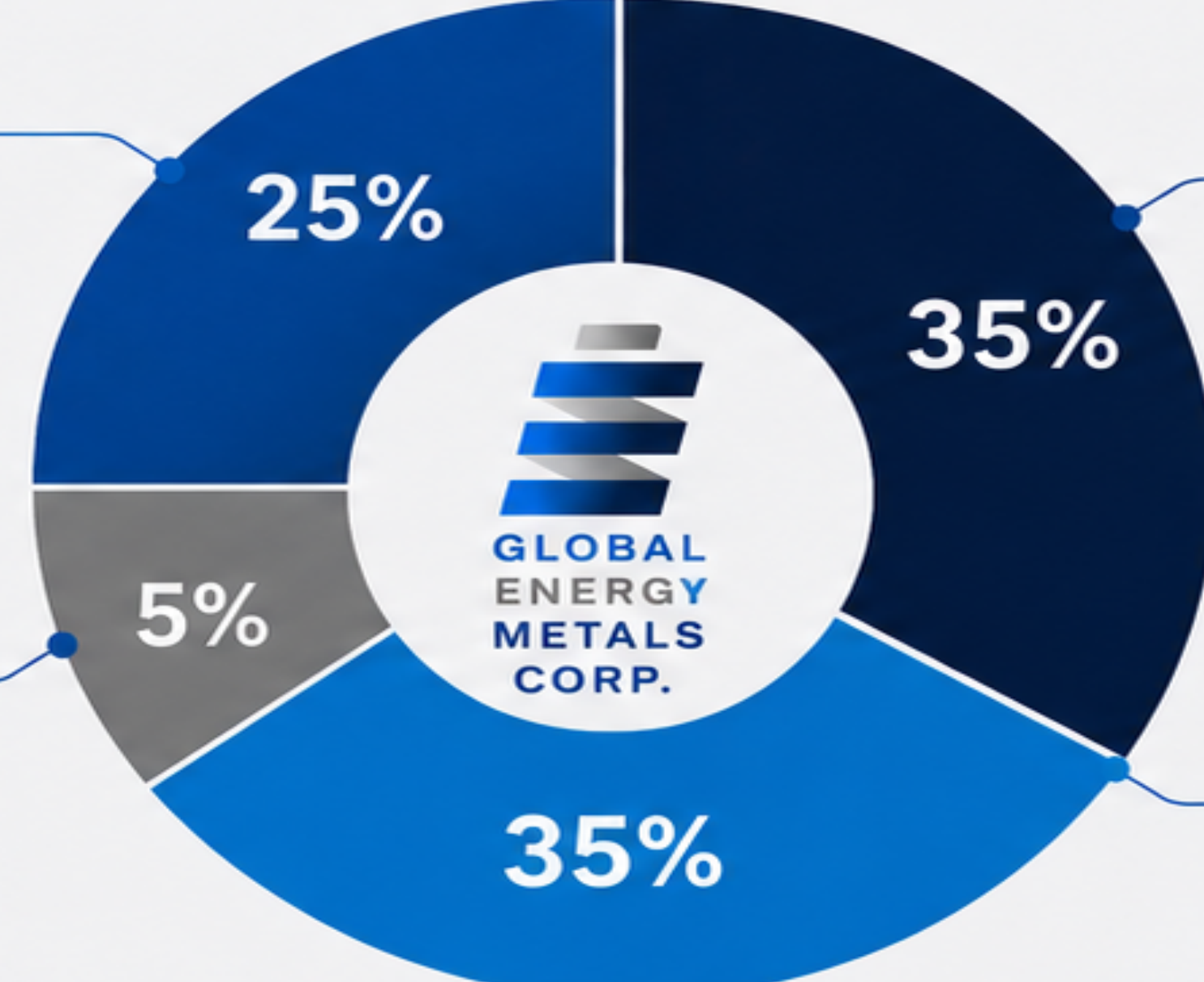



Cu COPPER	Ni NICKEL	Co COBALT	Li LITHIUM	U URANIUM	C GRAPHITE	Ag SILVER	REE RARE EARTH ELEMENTS
---------------------	---------------------	---------------------	----------------------	---------------------	----------------------	---------------------	-----------------------------------

STRONG CAPITAL STRUCTURE. DIVERSE INSTITUTIONAL OWNERSHIP.

A solid share structure and a well-balanced ownership base aligned with long-term value creation.

CAPITAL STRUCTURE		
	SHARES OUTSTANDING	67.572M
	OPTIONS at \$0.10	2.350M
	WARRANTS 21.650 HALF WARRANTS @ \$0.05	21.650M
	FULLY DILUTED	91.572M

As of May 20, 2025

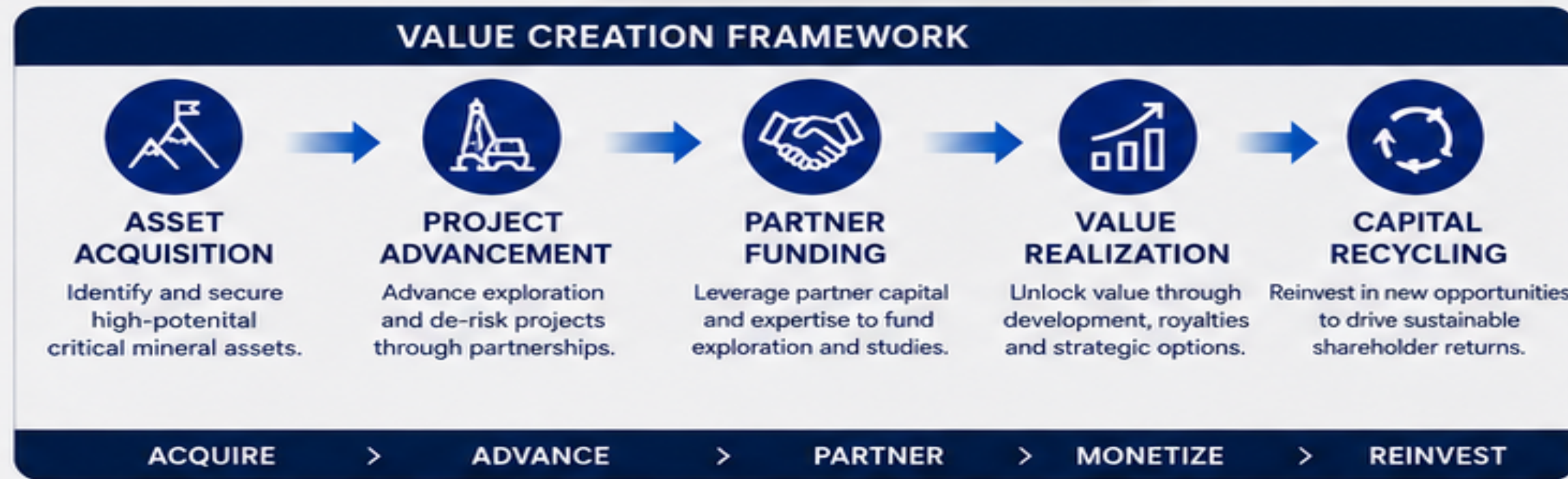
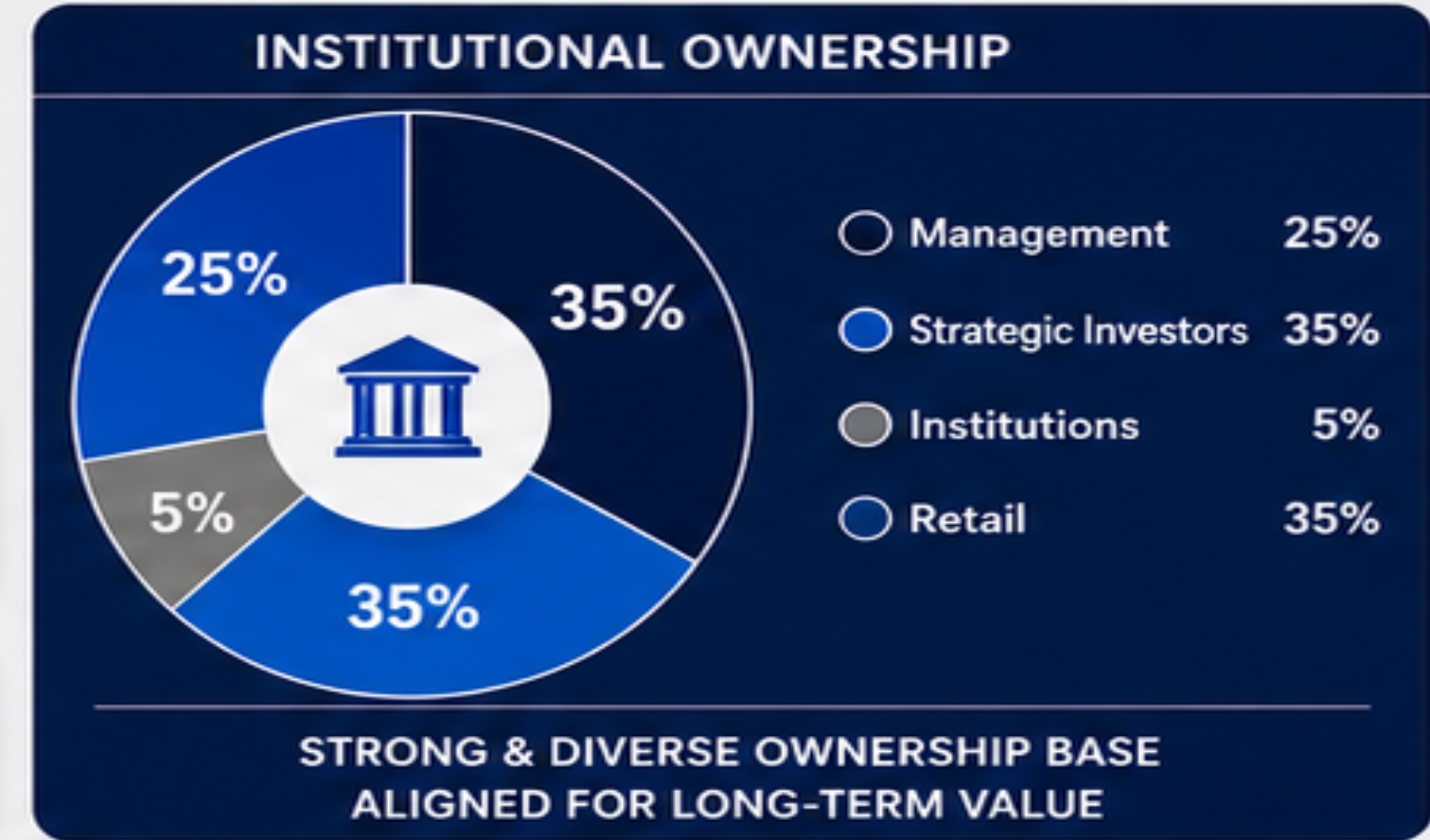
OWNERSHIP OVERVIEW		
<p>MANAGEMENT</p>  <p>Experienced leadership team with significant skin in the game.</p>	 <p>The donut chart shows the ownership breakdown for Global Energy Metals Corp. with segments for Management (25%), Institutions (5%), Strategic Investors (35%), and Retail (35%).</p>	<p>STRATEGIC INVESTORS</p>  <p>Long-term oriented partners aligned with our growth strategy.</p>
<p>INSTITUTIONS</p>  <p>Institutional investors providing credibility and market support.</p>		<p>RETAIL</p>  <p>Retail shareholders supporting the long-term vision and mission.</p>

 <p>BUILT FOR LONG-TERM VALUE A disciplined capital structure and diversified ownership base provide a strong foundation for sustainable growth.</p>	 <p>ALIGNMENT Management and strategic investors aligned with shareholder value.</p>	 <p>STABILITY Institutional support provides stability and market credibility.</p>	 <p>GROWTH Well-positioned to advance projects and create long-term value.</p>
---	--	--	--

STRATEGIC SHAREHOLDER ALIGNMENT

PARTNERING WITH INDUSTRY LEADERS TO CREATE LONG-TERM VALUE

Global Energy Metals leverages strategic partnerships, earn-in agreements, carried interests and project-level alliances to advance assets while minimizing shareholder dilution.



STRATEGIC PARTNERSHIP PORTFOLIO

PROJECT	PARTNER	STRUCTURE / ALIGNMENT
Millennium Project	MBK METAL BANK LIMITED	Earn-In / Carried Interest
Mt Isa Projects	Hammer Metals Ltd.	Strategic Alliance
Râna Project	KINGSROSE MINING metals one	Joint Venture Exposure
Monument Peak	GROUNDPEOPLE APPAREL	Option Agreement + Royalty
Peace River Project	NEOLITHICA LTD.	Equity Exposure
Athabasca Uranium Projects	TERRANORTH	Strategic Partnership

- ### WHY THIS MATTERS
- Non-dilutive project advancement
 - Exposure to multiple critical commodities
 - Shared technical expertise
 - Capital-efficient growth model
 - Multiple value realization opportunities

MILLENNIUM PROJECT OVERVIEW

Queensland Copper-Cobalt-Graphite Project

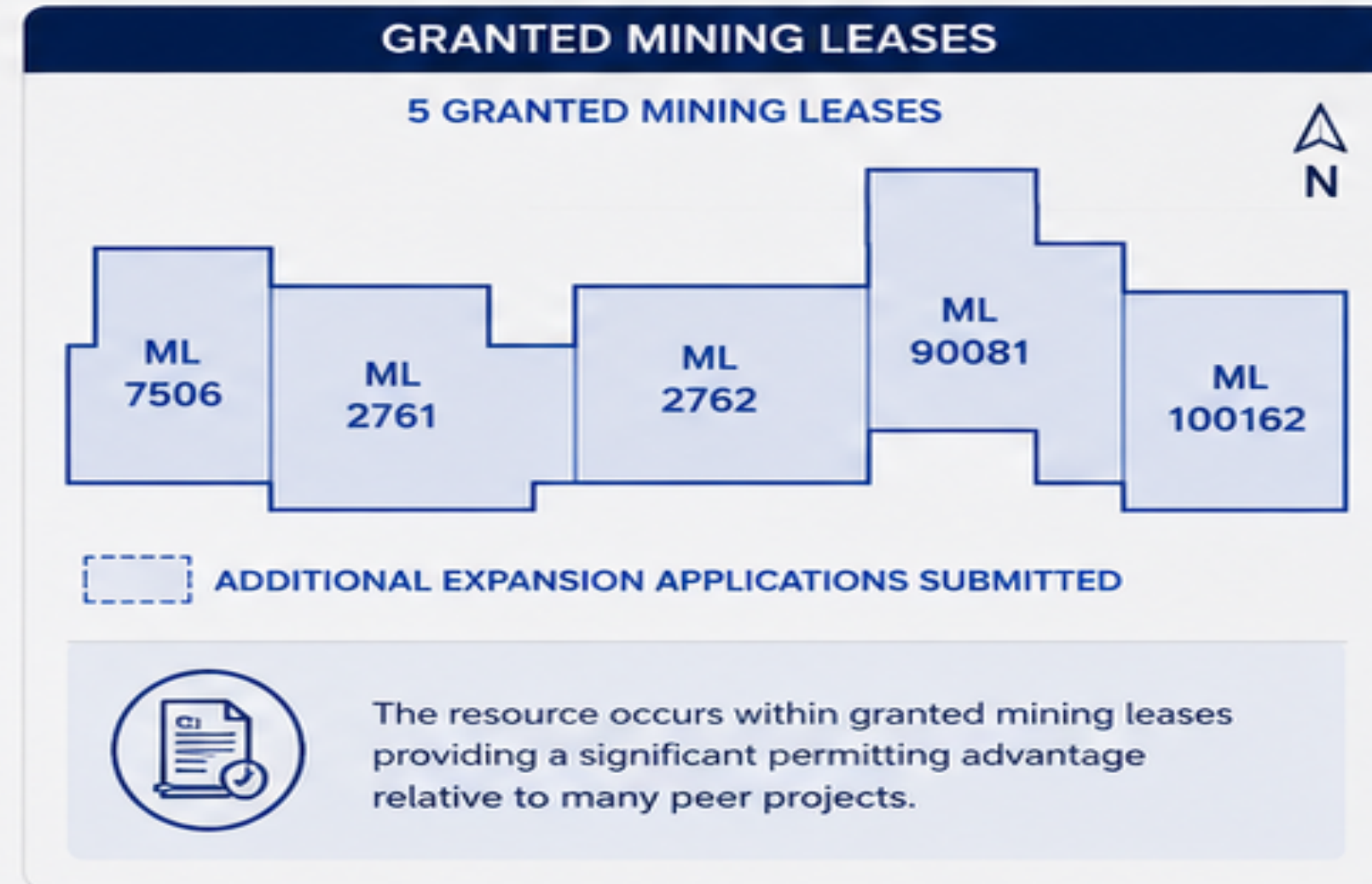
Advanced critical minerals project positioned within one of Australia's premier mining districts with significant resource growth and development potential.



RESOURCE SUMMARY	
JORC 2012 INFERRED RESOURCE	
Resource	8.4 Mt
Grade	1.23% CuEq
Commodities	Copper, Cobalt, Gold, Silver, Graphite
Status	Open for Expansion
Ownership	GEMC 49%
Operator	Metal Bank Ltd.

Cu COPPER	Co COBALT	Au GOLD	Ag SILVER	C GRAPHITE
---------------------	---------------------	-------------------	---------------------	----------------------

The project hosts an established resource with demonstrated potential for expansion along strike, at depth and within multiple untested targets.



INFRASTRUCTURE & DEVELOPMENT ADVANTAGES

	PROCESSING SOLUTION 19 km from Rocklands processing facility
	POWER Existing regional grid access
	ROAD ACCESS Established haul roads and mining infrastructure
	WORKFORCE Cloncurry and Mount Isa mining centers
	MINING DISTRICT Located within Queensland's premier copper belt
	DEVELOPMENT READY Existing mining leases and advanced technical work



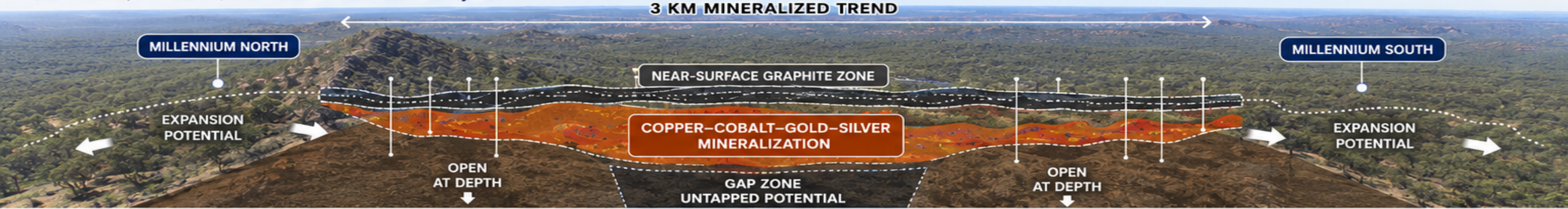
WHY MILLENNIUM MATTERS

EXISTING RESOURCE BASE	RESOURCE EXPANSION POTENTIAL	GRANTED MINING LEASES	INFRASTRUCTURE ADVANTAGE	COPPER-COBALT EXPOSURE	EMERGING GRAPHITE UPSIDE

MILLENNIUM GEOLOGY

Copper • Cobalt • Gold • Silver • Graphite

Queensland, Australia | District-Scale Mineralized System



STRATIGRAPHY & MINERALIZATION MODEL

HANGING WALL

MAIN HORIZON

FOOTWALL

C GRAPHITE ZONE

- Thick near-surface graphite
- Defined over >2 km strike
- High-grade intersections reported
- Potential future by-product stream

Cu Co Au Ag

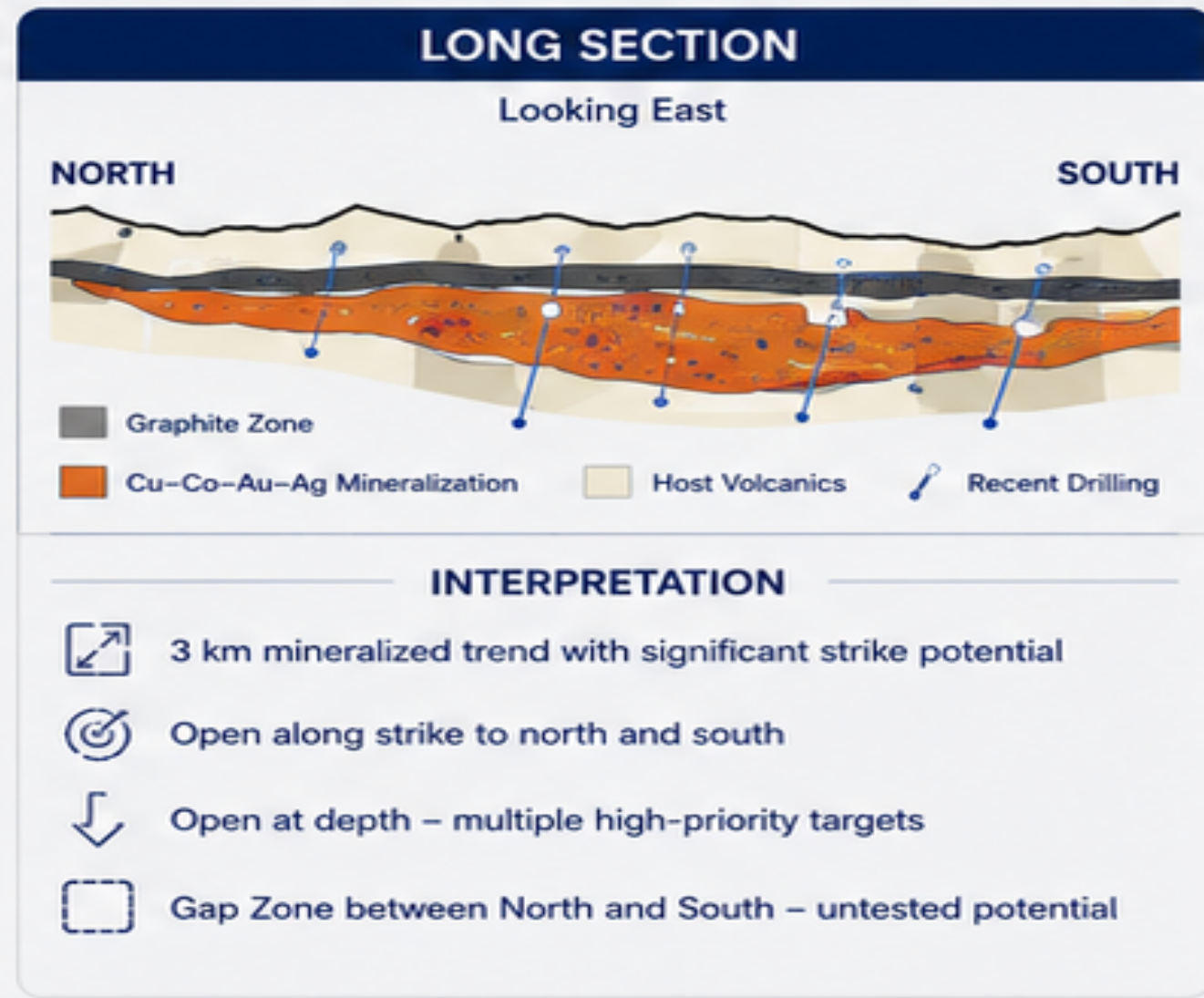
COBALT-COPPER-GOLD-SILVER

- Hosted within sheared mafic volcanics
- Structural corridors
- Replacement and vein-style sulphides
- Strong drill intersections across trend

BASEMENT VOLCANIC SEQUENCE

- Competent footwall host
- Foundation for mineralizing system

GRAPHITE → Cu-Co-Au-Ag RESOURCE → DEPTH EXPANSION



RESOURCE & GEOLOGICAL HIGHLIGHTS

RESOURCE BASE

JORC 2012 INFERRED RESOURCE

Resource	8.4 Mt
CuEq Grade	1.23%
Copper (Cu)	0.29%
Cobalt (Co)	0.09%
Gold (Au)	0.12 g/t
Silver (Ag)	0.72 g/t

Across five granted Mining Leases with significant expansion potential.

ML 7506	ML 2761	ML 2762	ML 90081	ML 100162
---------	---------	---------	----------	-----------

DRILL HIGHLIGHTS

COPPER-COBALT-GOLD RESOURCE

- High-grade copper and cobalt intersections across 3 km trend
- Resource remains open along strike
- Substantial depth potential confirmed
- Updated geological modelling defines 12–14 Mt CuEq system

GRAPHITE DISCOVERY

Recent drilling confirms:

- Thick near-surface graphite
- >2 km strike extent
- High-grade graphite intersections
- Adjacent to and above Cu-Co-Au resource



WHY THE GEOLOGY MATTERS

- ESTABLISHED 8.4 Mt RESOURCE BASE
- 3 KM MINERALIZED TREND
- MULTIPLE EXPANSION TARGETS
- SIGNIFICANT GRAPHITE UPSIDE
- 5 GRANTED MINING LEASES
- INFRASTRUCTURE ADVANTAGE 19 km to Rocklands Processing Facility

MILLENNIUM VALUE DRIVERS

Multiple Commodities. Multiple Pathways. Multiple Re-Rating Opportunities.

A diversified critical minerals project with exposure to copper, cobalt, gold, silver and emerging graphite upside.



8.4 Mt JORC RESOURCE

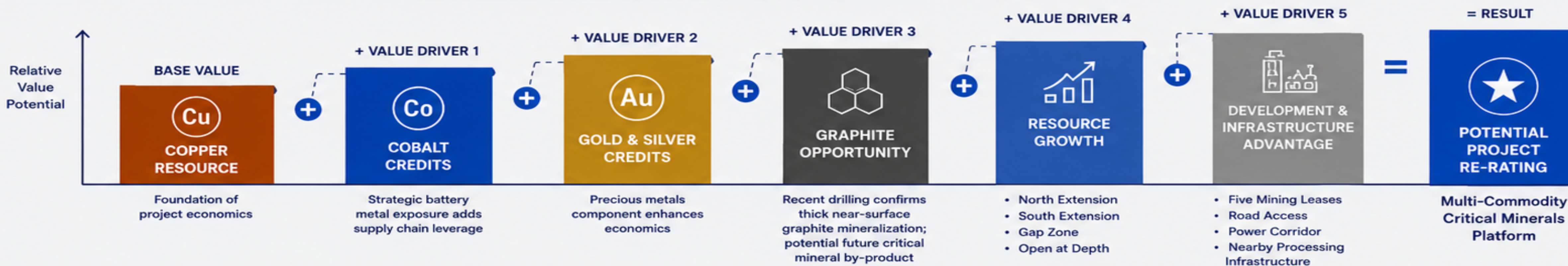
COPPER • COBALT • GOLD • SILVER
+ EMERGING GRAPHITE DISCOVERY

3 KM MINERALIZED TREND

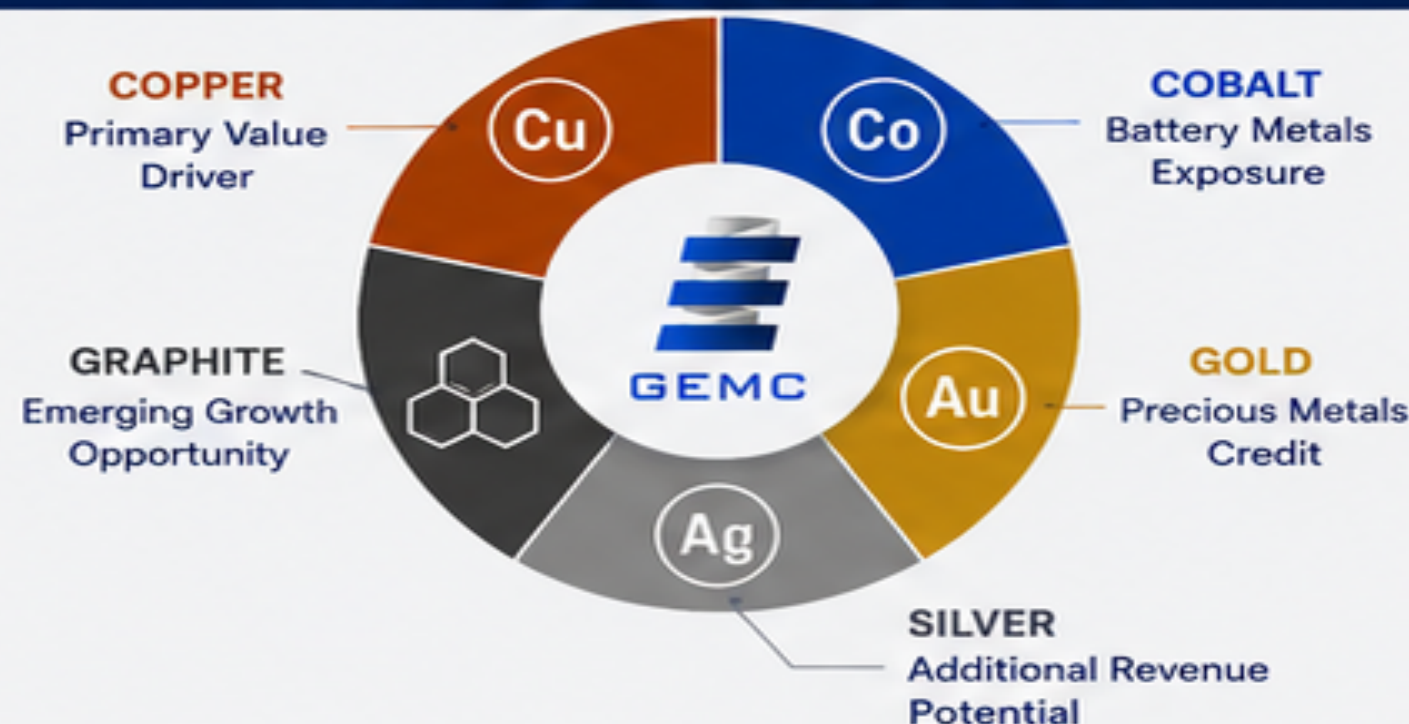
MILLENNIUM NORTH

MILLENNIUM SOUTH

MILLENNIUM VALUE BUILDING CONCEPT (ILLUSTRATIVE WATERFALL)



MULTI-COMMODITY EXPOSURE



WHY IT MATTERS

- | | |
|--|---|
| ESTABLISHED JORC RESOURCE
8.4 Mt @ 1.23% CuEq | OPEN-PIT POTENTIAL
Favourable geology and topography |
| 3 KM MINERALIZED TREND
Open along strike and at depth | GRAPHITE DISCOVERY ADDS NEW VALUE LAYER
Thick, near-surface graphite >2 km strike extent |
| FIVE GRANTED MINING LEASES
Significant permitting advantage | PARTNER-FUNDED ADVANCEMENT
Through Metal Bank Ltd. strategic partnership |

THE MILLENNIUM INVESTMENT CASE

- ✓ **COPPER** provides the foundation.
- ✓ **COBALT** provides strategic exposure.
- ✓ **GOLD** and **SILVER** enhance economics.
- ✓ **GRAPHITE** introduces an emerging critical minerals growth opportunity.
- ✓ Together they create a diversified critical minerals asset with multiple pathways for value creation and project re-rating.



RÅNA NICKEL PROJECT

Rana Municipality, Norway

A high-grade nickel project with a rich mining history, existing infrastructure and strategic relevance to Europe's critical minerals security.



HISTORICAL PRODUCTION



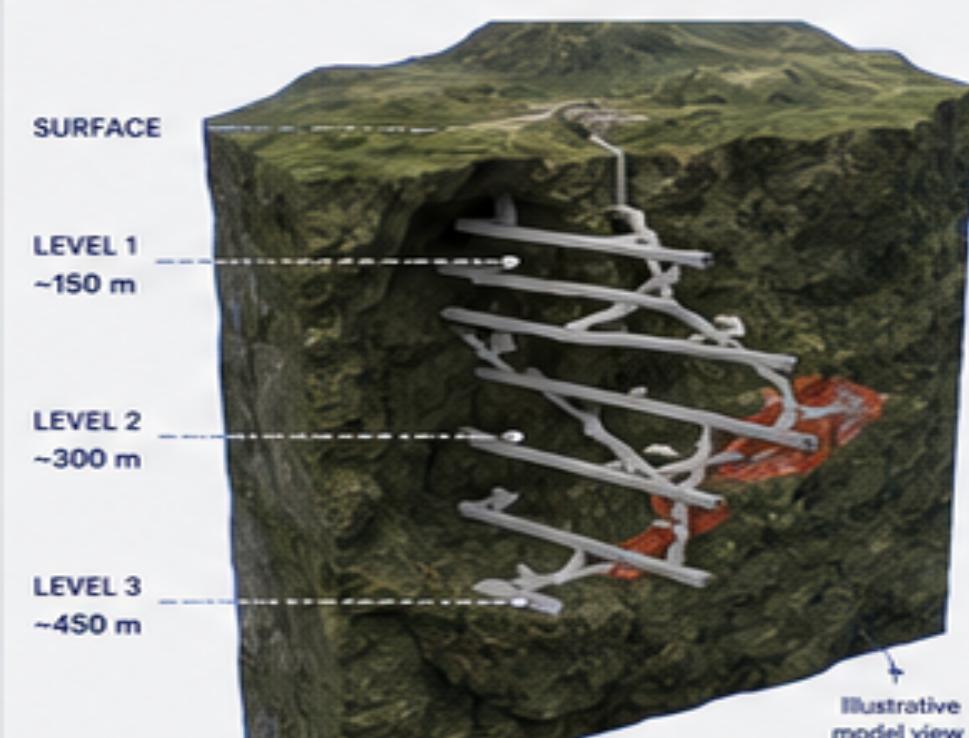
PROVEN NICKEL PRODUCER
30,000+ TONS
OF NICKEL PRODUCED
FROM RÅNA MINE
1948 – 1972

The Råna Mine was one of Norway's most significant nickel producers, operating for 24 years with high-grade nickel mineralization.

HISTORICAL PRODUCTION SUMMARY

Production Period	1948 – 1972
Total Nickel Produced	30,000+ tonnes
Average Grade (Historical)	~2.0 – 2.5% Ni
Mining Method	Underground
Commodity	Nickel (Ni)

EXISTING UNDERGROUND WORKINGS



Extensive historical underground development across multiple levels.



Existing declines, drifts and stopes provide significant exploration and development advantage.



High-grade nickel mineralization remains open along strike and at depth.



Existing infrastructure reduces future capital requirements.



HISTORICAL UNDDUEROUND



EXISTING DECLINE



UNDERGROUND WORKINGS

EUROPEAN STRATEGIC IMPORTANCE



CRITICAL MINERAL FOR EUROPE

Nickel is essential for stainless steel, EV batteries and advanced manufacturing.



SECURE SUPPLY PARTNER

Diversifies Europe's nickel supply away from high-risk jurisdictions.



LOWER CARBON FOOTPRINT

Norway's clean energy matrix supports low-carbon nickel production.



STRATEGIC LOCATION

Located in a mining-friendly jurisdiction with strong infrastructure and workforce.



SUPPORTING EUROPE'S TRANSITION TO A SECURE, SUSTAINABLE AND RESILIENT NICKEL SUPPLY CHAIN



PROVEN HISTORY
30,000+ tonnes Ni produced (1948 – 1972)



EXISTING INFRASTRUCTURE
Significant underground workings in place



HIGH-GRADE POTENTIAL
Mineralization open along strike and at depth



EUROPEAN STRATEGIC ASSET
Critical nickel project in politically stable Norway

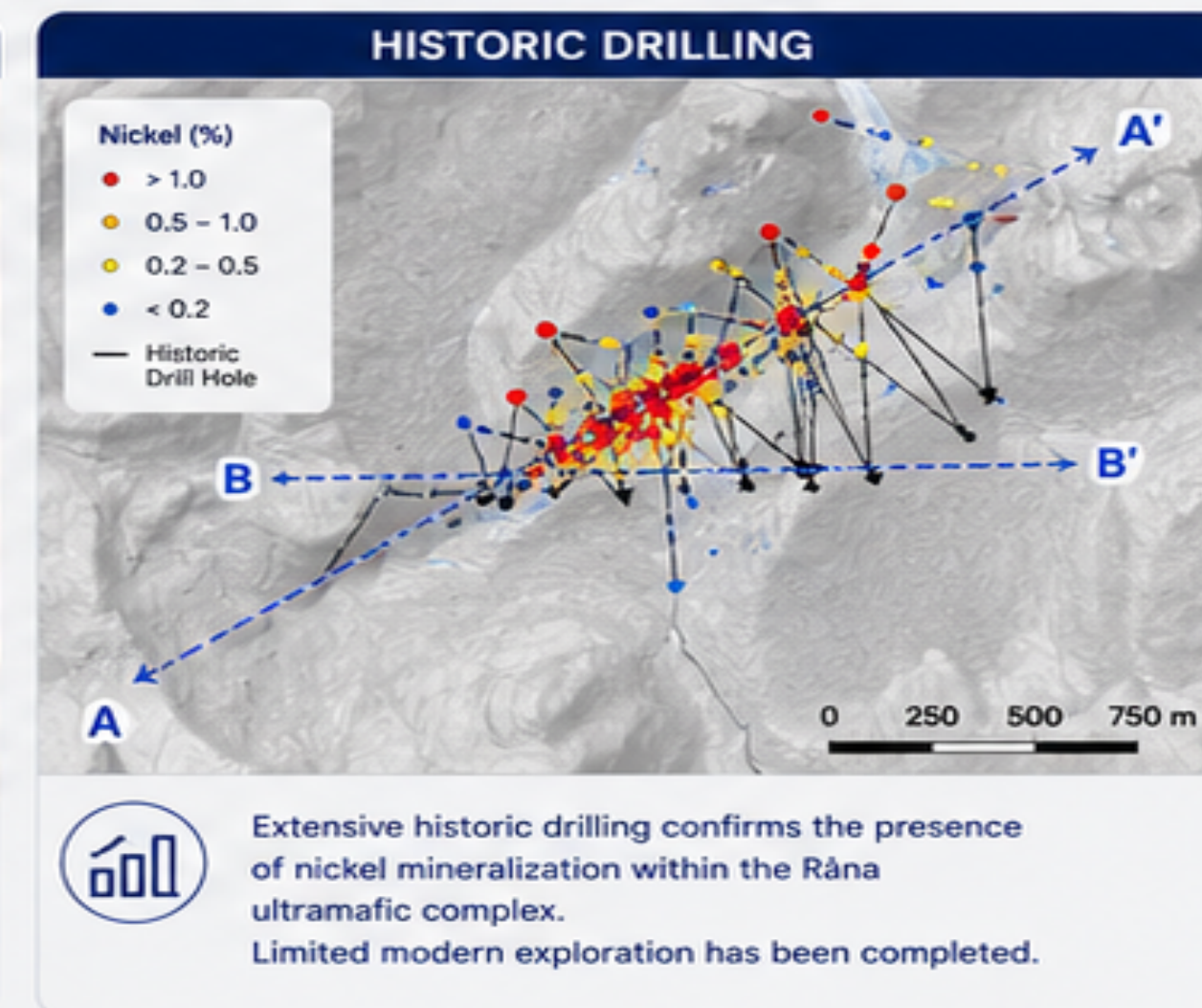
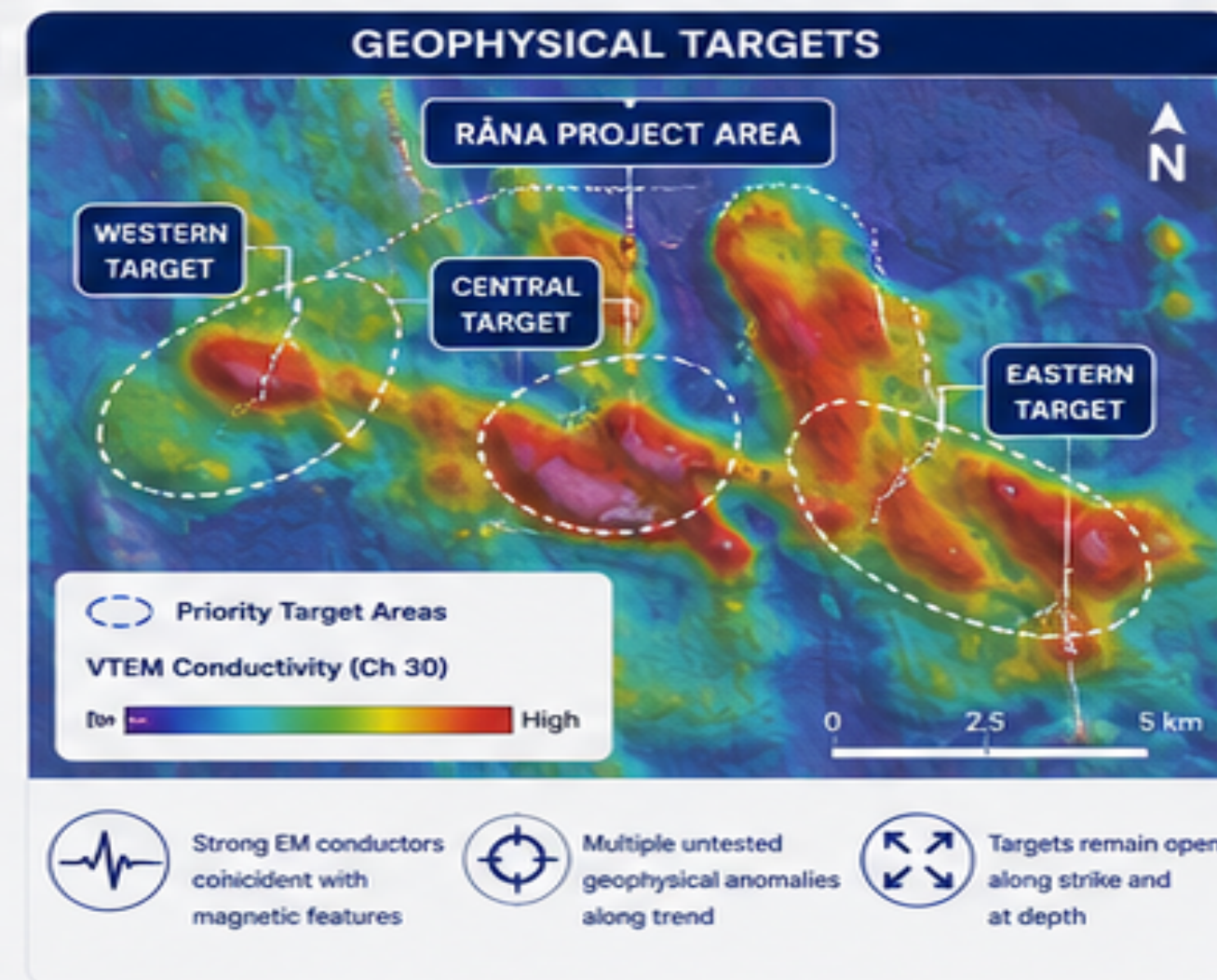
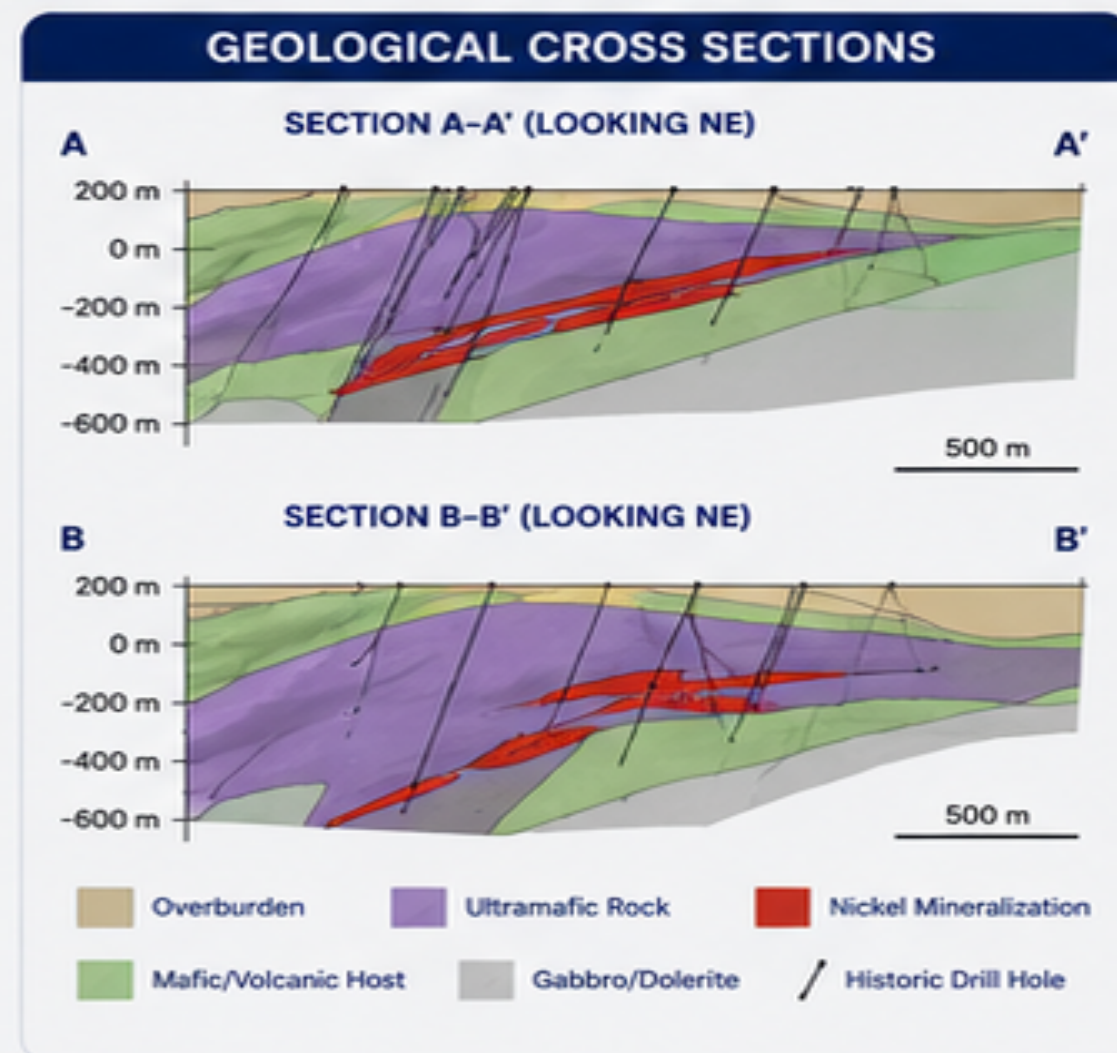
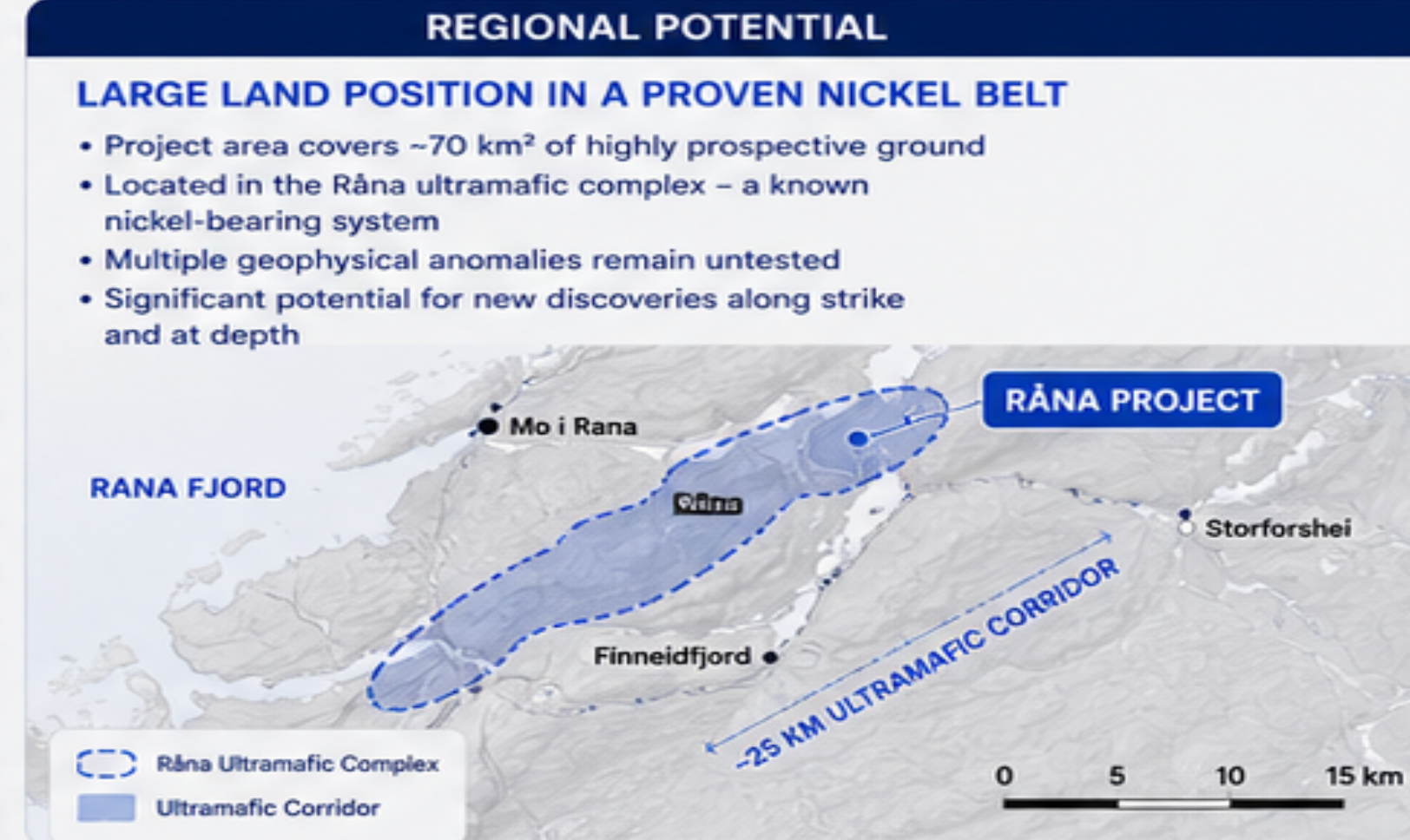


LEVERAGE PARTNERSHIPS
Strategic partners advancing the project

RÅNA NICKEL PROJECT

GEOLOGY & EXPLORATION POTENTIAL

A proven nickel camp with significant exploration upside across a large, underexplored land position in a premier mining jurisdiction.



EXPLORATION POTENTIAL

- LONG STRIKE POTENTIAL**
+12 km of prospective ultramafic trend with significant areas untested.
- DEPTH EXTENSION**
Historic workings and drilling indicate mineralization remains open at depth.
- MULTIPLE TARGETS**
Geophysical anomalies present high-potential targets for new nickel discoveries.
- TIER-1 JURISDICTION**
Located in Norway – stable, mining-friendly jurisdiction with access to infrastructure, power and skilled workforce.

RÅNA REPRESENTS A HIGH-POTENTIAL NICKEL PROJECT WITH SIGNIFICANT UPSIDE FOR DISCOVERY AND GROWTH.

PROVEN NICKEL CAMP
30,000+ tonnes Ni historically produced

EXISTING INFRASTRUCTURE
Historical underground workings and declines

MULTIPLE TARGETS
Geophysical and geological targets across +12 km trend

STRATEGIC LOCATION
Norway – critical minerals for Europe's energy transition

STRONG PARTNERSHIPS
Advancing the project with strategic partners

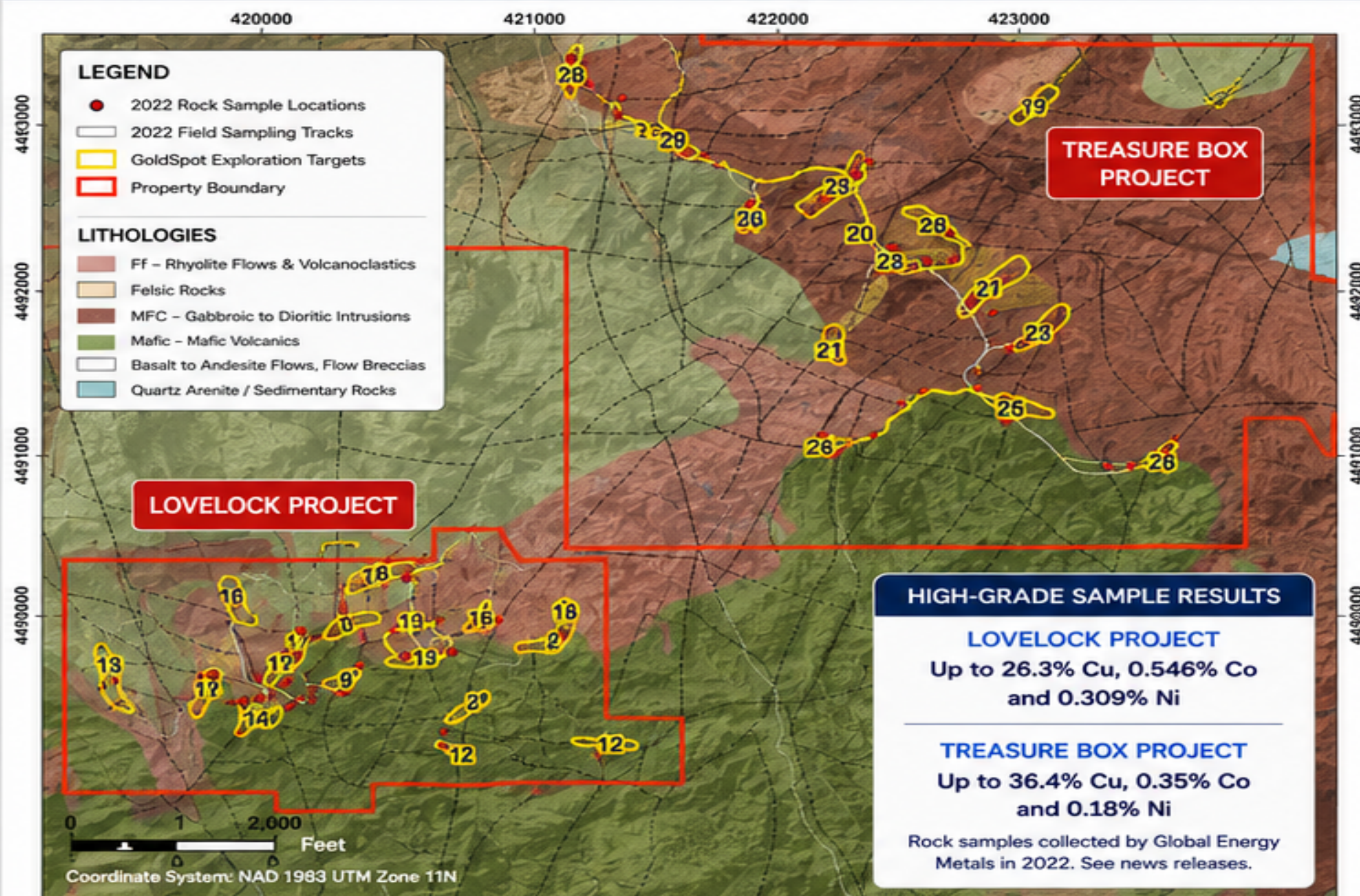
LOVELOCK & TREASURE BOX PROJECTS

Nevada, USA | America's Emerging Battery Metals District

High-grade copper, nickel, cobalt and gold projects located within a proven mining jurisdiction with exceptional infrastructure, power and logistics.



PROPERTY MAP & GEOLOGY



HIGH-GRADE SAMPLE RESULTS

LOVELOCK PROJECT

Up to 26.3% Cu, 0.546% Co and 0.309% Ni

TREASURE BOX PROJECT

Up to 36.4% Cu, 0.35% Co and 0.18% Ni

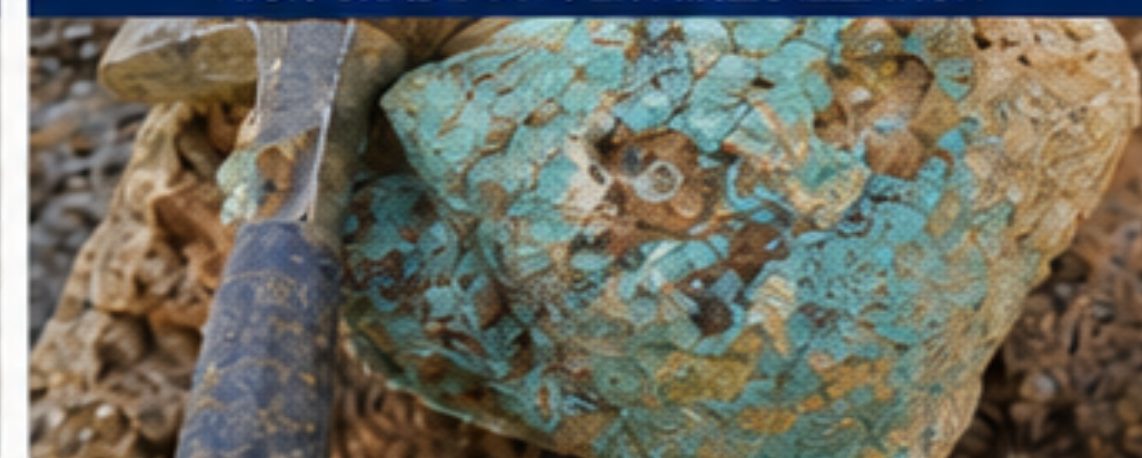
Rock samples collected by Global Energy Metals in 2022. See news releases.

HISTORIC WORKINGS & MINERALIZATION

HISTORIC UNDERGROUND WORKINGS



HIGH-GRADE COPPER MINERALIZATION



OXIDE COPPER ZONE



NICKEL-COBALT MINERALIZATION



EXCEPTIONAL INFRASTRUCTURE & ACCESS



ROAD ACCESS

Adjacent to State Route 400 and I-80 corridor



POWER

High-voltage power lines nearby



WATER

Access to water rights and local sources



LOGISTICS

~90 miles to Reno/Tahoe International Airport



WHY LOVELOCK & TREASURE BOX MATTER



EXPOSURE TO BATTERY METALS
Cu, Ni, Co



MULTIPLE HIGH-GRADE TARGETS ALONG
12+ KM TREND



HISTORIC WORKINGS CONFIRM MINERALIZED
SYSTEM



LARGE LAND POSITION
107 KM² IN PROVEN
MINING JURISDICTION



EXCELLENT INFRASTRUCTURE
& ACCESS



STRATEGICALLY POSITIONED IN THE UNITED STATES

Nevada is one of the world's premier mining jurisdictions with a long history of production, supportive permitting environment and access to critical infrastructure. Lovelock and Treasure Box are well-positioned for discovery and development of battery metals essential for the energy transition.

LOVELOCK TECHNICAL POTENTIAL

High-Grade Copper, Cobalt, Nickel & Gold System

Multiple historical producers with significant resource potential across a proven structural corridor in Nevada's emerging battery metals district.

Cu
COPPER

Co
COBALT

Ni
NICKEL

Au
GOLD



RESOURCE POTENTIAL



UNTESTED HIGH-GRADE TARGETS
8+ GoldSpot target areas along ~12+ km trend with strong rock and soil geochemical anomalies.



HIGH-GRADE COPPER POTENTIAL
Rock sampling up to 26.3% Cu, 0.546% Co & 0.309% Ni at Lovelock Project.



BATTERY METALS EXPOSURE
Nickel and cobalt mineralization associated with mafic-ultramafic host rocks and oxide copper zones.



SIGNIFICANT UPSIDE
Historical drilling and workings test only a fraction of the prospective corridor and depth potential.

HISTORIC PRODUCTION & WORKINGS

HISTORIC PRODUCTION



1900s - 1940s

HIGH-GRADE COPPER CAMP

Multiple small-scale producers with high-grade copper shipments.



~10,000 TONS
High-grade copper shipments (est.)



10+ ADITS & SHAFTS
Throughout property



HISTORIC UNDERGROUND
Development on multiple mineralized zones



LIMITED MODERN EXPLORATION
Modern exploration has been minimal despite strong potential.



Historic Adit



Historic Shaft



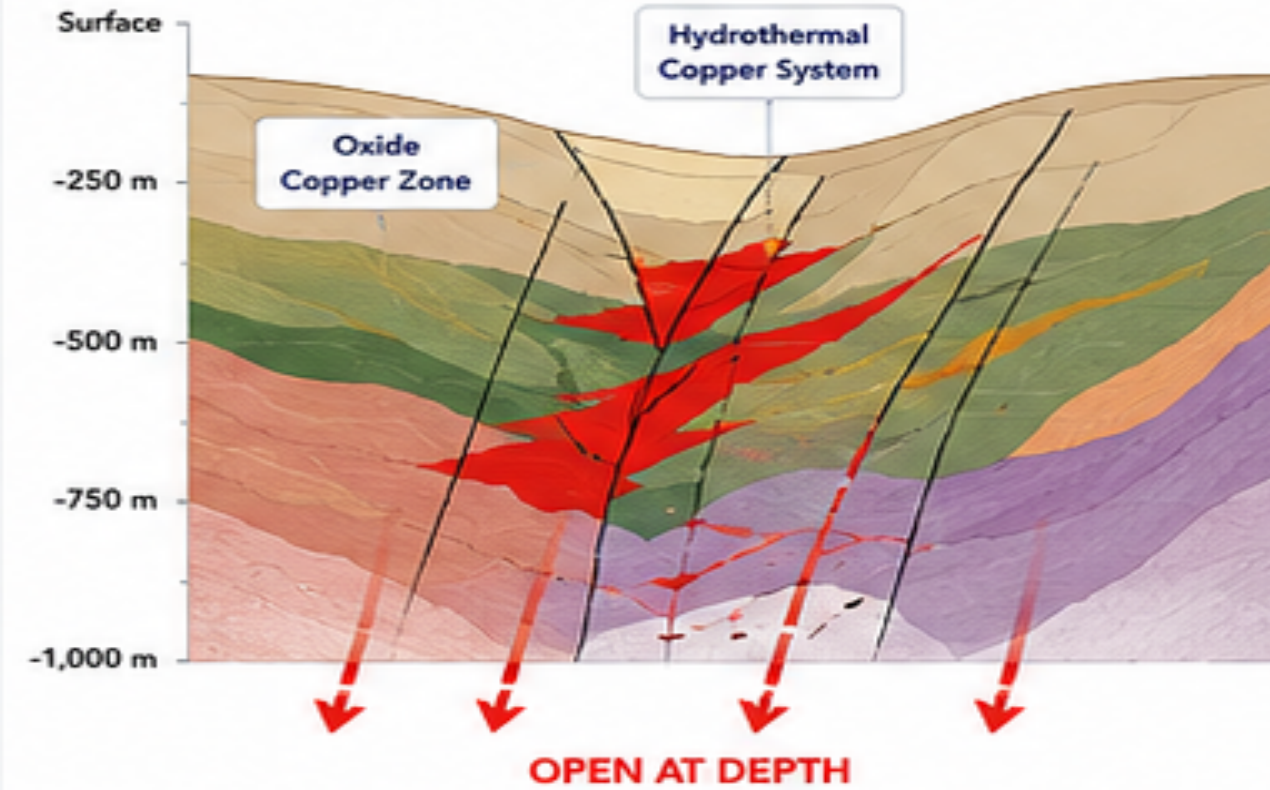
Historic Workings



Oxide Copper Zone

GEOLOGY MODEL & MINERALIZATION CONTROLS

GEOLOGICAL MODEL



MINERALIZATION CONTROLS



Structural Control
Mineralization localized along NW-trending faults and fracture zones.



Lithological Control
Favorable host rocks include Jmv mafic volcanics and gabbroic to dioritic intrusions.



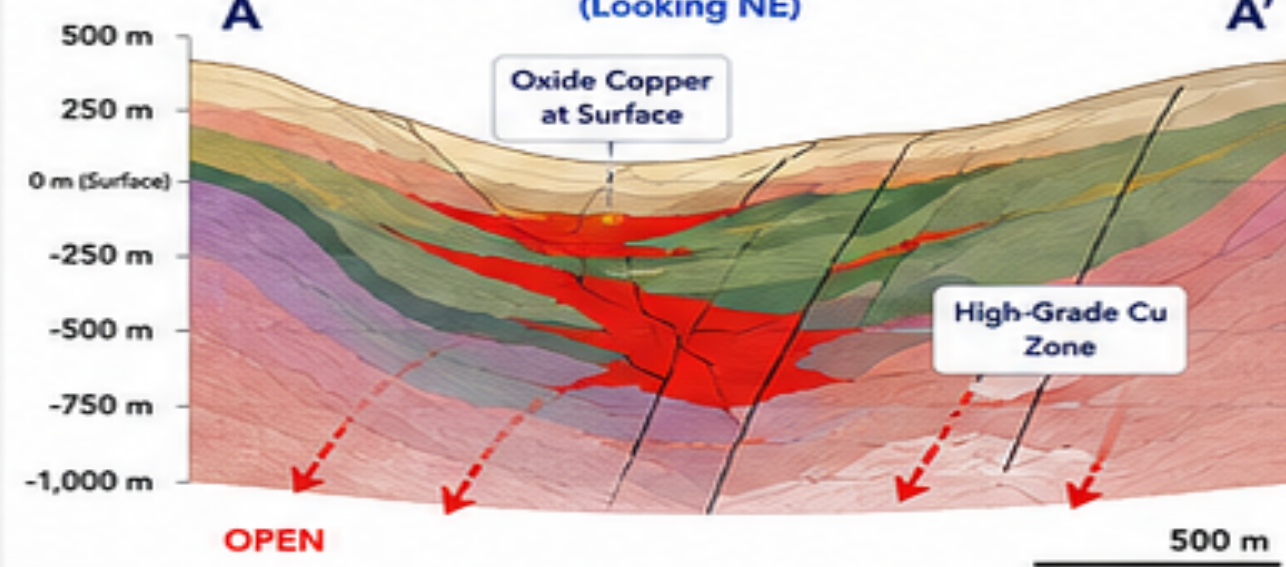
Hydrothermal Activity
Copper-cobalt-nickel sulphides and oxide copper formed by hydrothermal fluids.



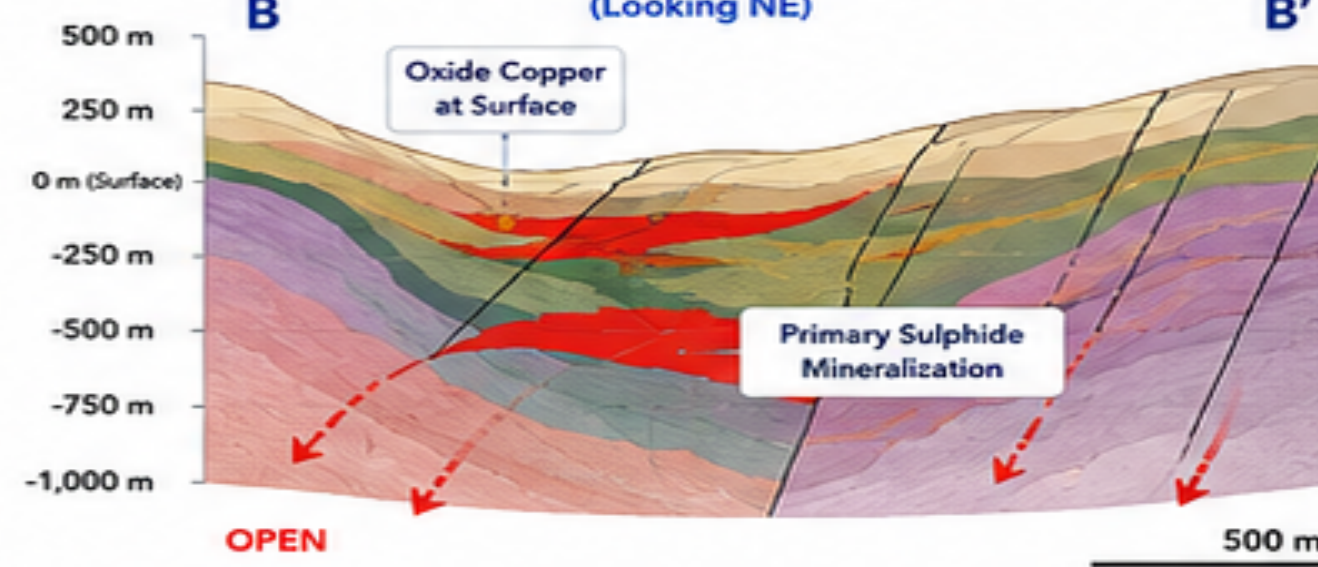
Multi-Phase System
Oxide copper at surface grading to primary sulphide mineralization at depth.

CROSS SECTIONS THROUGH LOVELOCK TARGETS

SECTION A-A' (Looking NE)



SECTION B-B' (Looking NE)



MINERALIZATION FEATURES & EXPLORATION HIGHLIGHTS



High-grade rock samples up to 26.3% Cu, 0.546% Co & 0.309% Ni confirm robust mineralizing system.



Historic drilling intercepted significant copper and gold, including up to 13% Cu and 1.33 g/t Au.



Multiple untested targets identified by geochemistry, geophysics and structural mapping.

TARGET / LOCATION	TYPE	HIGHLIGHT RESULT
LL22-025 (Lovelock)	Rock Sample	2.31% Cu, 0.42% Co, 5460 ppm Co, 3090 ppm Ni
LL22-026 (Lovelock)	Rock Sample	>0.5 g/t Ag, 29 ppm Co, 21 ppm Ni
TB22-004 (Treasure Box)	Rock Sample	1.32% g/t Au, 167 g/t Ag, 135% Cu
TB22-012 (Treasure Box)	Rock Sample	0.005 g/t Au, 0.5 g/t Ag, 4.05% Cu

STRONG GEOLOGICAL MODEL, HISTORICAL PRODUCTION & HIGH-GRADE SAMPLES SUPPORT EXCEPTIONAL RESOURCE GROWTH POTENTIAL



PROVEN DISTRICT
Historic high-grade copper camp with production



MULTIPLE HIGH-GRADE TARGETS
8+ priority targets across ~12+ km trend



BATTERY METALS POTENTIAL
Copper, cobalt and nickel exposure in a tier-1 jurisdiction



OPEN AT DEPTH & ALONG STRIKE
Geology and geophysics indicate significant upside



UNDEREXPLORED ASSET
Modern exploration to date has been limited

MONUMENT PEAK & STRATEGIC MONETIZATION

Unlocking Value Today. Retaining Exposure for Tomorrow.

GEMC has entered into a definitive option agreement with Grounded People Apparel Inc. to advance the Monument Peak silver-copper-gold project in Idaho while retaining meaningful upside and strengthening the Company's capital position.



MONUMENT PEAK PROJECT
Idaho, USA

- DISTRICT-SCALE SILVER-COPPER-GOLD PROJECT**
- ✓ Significant exploration upside and resource potential
 - ✓ Large land position in a historic mining district
 - ✓ Attractive infrastructure and year-round access
 - ✓ Compelling silver, copper and gold system
 - ✓ Potential future feed for U.S. critical minerals supply chain

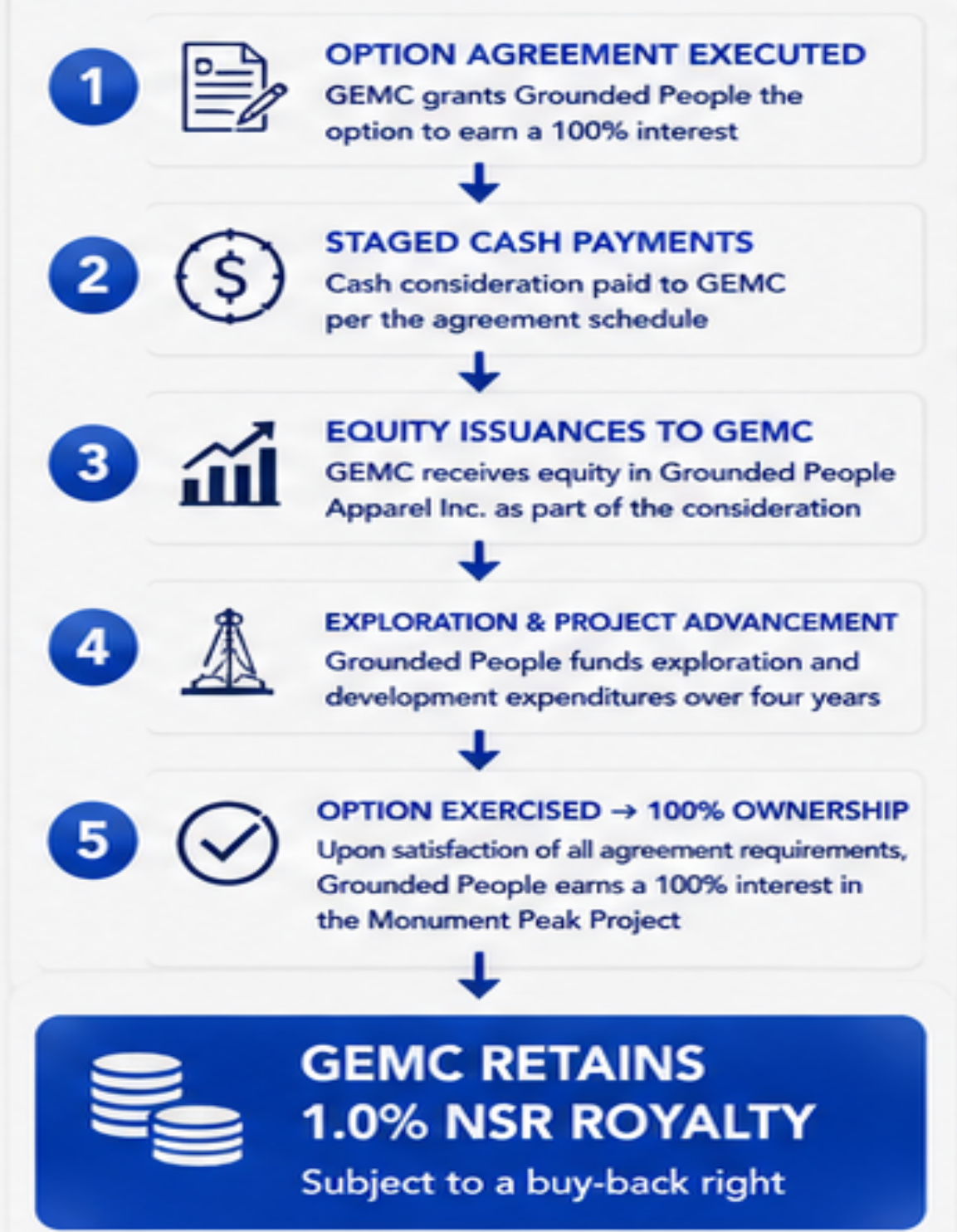
STRATEGIC PARTNERSHIP STRUCTURE



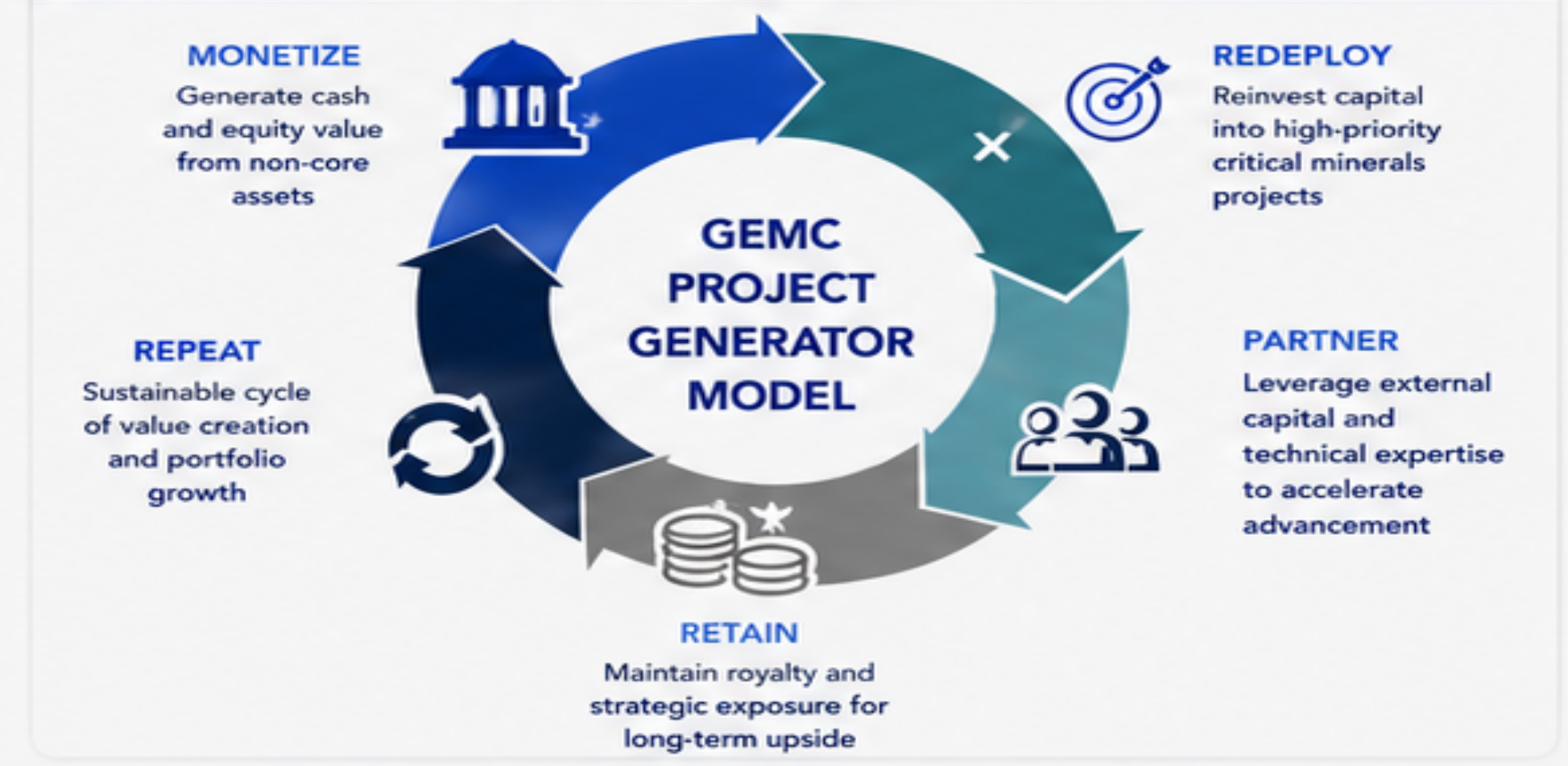
KEY TRANSACTION HIGHLIGHTS

- FOUR-YEAR EARN-IN STRUCTURE**
The Optionee may earn a 100% interest through staged cash payments, equity issuances, and exploration commitments over a four-year period.
- RETAINED ROYALTY**
GEMC will retain a 1.0% NSR Royalty on the Project upon exercise of the option subject to a buy back right.
- NON-DILUTIVE CONSIDERATION**
Exposure to Project upside through cash, equity participation, and exploration funding without shareholder dilution at the Company level.
- INVESTOR RIGHTS AGREEMENT**
Right to appoint a nominee to the Optionee's board of directors, ensuring ongoing oversight, alignment on key decisions, and the ability to actively contribute to the Optionee's growth and governance.

TRANSACTION STRUCTURE



STRATEGIC CAPITAL RECYCLING MODEL



RETAINED UPSIDE

- 1.0% NSR ROYALTY**
 - Long-term exposure to future production
 - Buy-back provision
 - No future capital contribution required
- STRATEGIC EQUITY EXPOSURE**
 - Share participation in Grounded People
 - Alignment with project success and value creation
- GOVERNANCE RIGHTS**
 - Right to appoint a board nominee
 - Ongoing strategic oversight and influence

NON-DILUTIVE VALUE CREATION

The Monument Peak transaction provides GEMC shareholders with exposure to project advancement through cash consideration, equity participation, funded exploration and a retained 1.0% NSR royalty, while allowing management to recycle capital into high-priority critical minerals opportunities across the Company's global portfolio.

WHY THIS TRANSACTION MATTERS

IMMEDIATE VALUE	LONG-TERM VALUE
<ul style="list-style-type: none"> Cash Consideration 	<ul style="list-style-type: none"> 1.0% NSR Royalty
<ul style="list-style-type: none"> Equity Ownership in Optionee 	<ul style="list-style-type: none"> Production Exposure
<ul style="list-style-type: none"> Third-Party Exploration Funding 	<ul style="list-style-type: none"> Upside Participation
<ul style="list-style-type: none"> No Shareholder Dilution 	<ul style="list-style-type: none"> Strategic Board Representation

PEACE RIVER LITHIUM EXPOSURE

Strategic Lithium Optionality via Equity Investment & Royalty Exposure

GEMC holds strategic equity exposure in NeoLithica Ltd. and an option to acquire a 1.0% NSR royalty on the Peace River Lithium Project, one of North America's largest lithium-brine development opportunities.



PROJECT OVERVIEW



LARGE-SCALE LITHIUM RESOURCE

The Peace River Lithium-brine Aquifer hosts one of the world's largest lithium resources in a proven geological basin.



ALBERTA ADVANTAGE

Located in a top-tier mining jurisdiction with excellent infrastructure, skilled workforce and supportive government.



DLE POTENTIAL

Well-suited for Direct Lithium Extraction (DLE) – a low-footprint, efficient, and scalable extraction method.

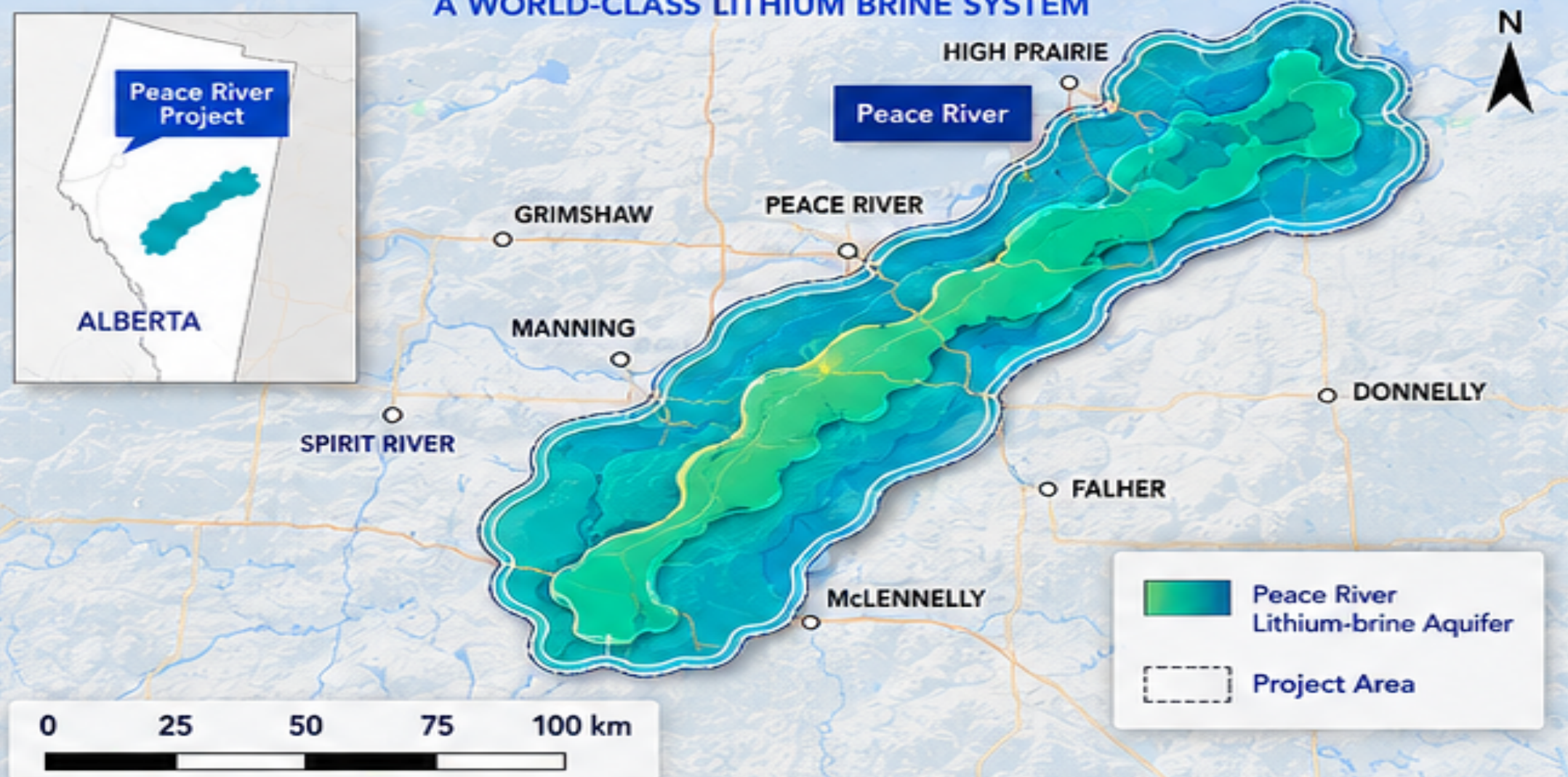


STRATEGIC OPTIONALITY

Equity exposure in NeoLithica plus the option to acquire a 1.0% NSR royalty provides leveraged exposure to the future of lithium in North America.

PEACE RIVER LITHIUM-BRINE AQUIFER

A WORLD-CLASS LITHIUM BRINE SYSTEM



INFERRED MINERAL RESOURCE

Li 10.0 MILLION TONNES LCE



Average Grade: 70.0 mg/L Lithium



Resource Category: Inferred



Deposit Type: Lithium Brine



Jurisdiction: Alberta, Canada



NI 43-101 Compliant Resource Estimate

ALBERTA INFRASTRUCTURE ADVANTAGE

- ✓ Existing Roads, Power & Rail
- ✓ Oil & Gas Service Sector Expertise
- ✓ Skilled Workforce
- ✓ Low-Cost Energy
- ✓ Established Regulatory Framework
- ✓ Year-Round Access

DIRECT LITHIUM EXTRACTION (DLE) POTENTIAL



STRATEGIC EXPOSURE THROUGH NEOLITHICA



STRATEGIC EQUITY EXPOSURE

- Equity ownership in NeoLithica Ltd.
- Exposure to project advancement and value creation
- Participation in future corporate growth initiatives



ROYALTY OPTIONALITY

- Option to acquire a 1.0% NSR Royalty
- Long-term production-linked exposure
- Potential future royalty cash flow stream

RESULT:

LOW-COST ENTRY. LONG-TERM LITHIUM UPSIDE.

WHY THIS MATTERS

- ✓ Lithium is critical to the global energy transition
- ✓ Peace River hosts a 10.0 Mt LCE inferred resource, positioning it among the largest lithium-brine development opportunities in North America
- ✓ Strategic exposure through equity and royalty option provides leveraged upside
- ✓ Low-entry, high-upside optionality with minimal capital commitment
- ✓ Positions GEMC for future value realization



STRATEGIC LITHIUM OPTIONALITY THROUGH EQUITY AND ROYALTY EXPOSURE

GEMC's strategic investment in NeoLithica Ltd. and option to acquire a 1.0% NSR royalty provides shareholders with leveraged exposure to the Peace River Lithium Project, which hosts an inferred mineral resource estimate of 10.0 million tonnes of lithium carbonate equivalent (LCE) at an average grade of 70.0 mg/L lithium. Located in Alberta, Canada, the Project benefits from exceptional infrastructure, direct lithium extraction (DLE) potential, and long-term exposure to one of North America's largest lithium-brine development opportunities.

PORTFOLIO CATALYST CALENDAR

12-Month Value Creation Roadmap

Advancing Multiple Value Drivers Across a Diversified Critical Minerals Portfolio



PROJECT	Q2 2026 Apr – Jun 2026	Q3 2026 Jul – Sep 2026	Q4 2026 Oct – Dec 2026	Q1 2027 Jan – Mar 2027	Q2 2027 Apr – Jun 2027	CATALYST LEGEND
RÅNA NICKEL PROJECT Norway Ni • Cu • Co ✓ ROYALTY IN PLACE	Strategic Partnership Discussions	Technical Review	Resource Expansion Drilling	Partner Advancement	Monetization Optionality	DRILLING & EXPLORATION Advance targets and expand resource potential STUDIES & TECHNICAL ADVANCEMENT Technical work, studies and development progress PARTNERSHIPS / EARN-INS Strategic partnerships and capital aligned to advance projects ROYALTIES Create and retain long-term royalty exposure across our portfolio MONETIZATIONS Optionality to monetize assets and recycle capital into new opportunities
MILLENNIUM PROJECT Australia Cu • Co • Graphite	Graphite Follow-Up Drilling	Resource Growth Studies	Development Studies	Strategic Partnership Activity	Monetization Optionality	
MT ISA PROJECTS Australia Cu • Co • Graphite ✓ ROYALTY IN PLACE	Royalty Optimization	Partner Advancement	Exploration Expansion	Resource Growth	Monetization Optionality	
MONUMENT PEAK PROJECT Idaho, USA Cu • Ag • Au ✓ ROYALTY IN PLACE	Earn-In Progress	Exploration Funding	Grounded Milestone	Strategic Investment Rights	Monetization Optionality	
ATHABASCA URANIUM PORTFOLIO Canada U • REE ✓ ROYALTY IN PLACE	Portfolio Review	Partner Advancement	Drill Programs	Uranium Market Catalysts	Monetization Optionality	
PEACE RIVER LITHIUM PROJECT Alberta, Canada Li ✓ ROYALTY IN PLACE	DLE Advancement	Pilot Scale Growth	Strategic Financing	Development Studies	Monetization Optionality	



ROYALTIES. PARTNERSHIPS. MONETIZATIONS.

Building Long-Term Shareholder Value Through Disciplined Capital Recycling.

- ✓ Råna strategic partnership opportunities
- ✓ Millennium graphite and cobalt growth initiatives
- ✓ Mt Isa copper-cobalt advancement

- ✓ Monument Peak earn-in milestones and retained royalty exposure
- ✓ Athabasca uranium market re-rating
- ✓ Peace River lithium development and DLE commercialization

PEER GROUP COMPARISON

Valuation Disconnect: Global Energy Metals vs. Critical Minerals Peers

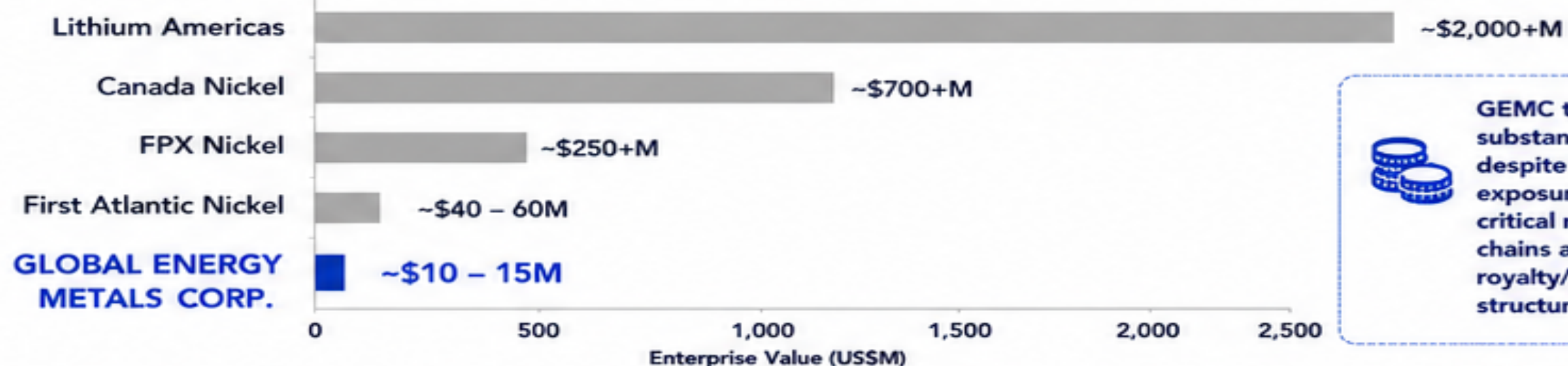
Diversified Exposure Across Multiple Critical Mineral Supply Chains at a Fraction of Peer Valuations



COMPANY	ENTERPRISE VALUE (US\$M)*	PRIMARY COMMODITY FOCUS	RESOURCE EXPOSURE	JURISDICTION (FOCUS)	DEVELOPMENT STAGE / BUSINESS MODEL
GLOBAL ENERGY METALS CORP.	~\$10 – 15M	Multi-Metal	Cu Ni Co Li U Gr Ag	USA, Canada, Norway, Australia	Royalty / Project Generator
LITHIUM AMERICAS	~\$2,000+M	Lithium	Li Thacker Pass (USA) Argentina Projects	USA / Argentina	Development
CANADA NICKEL COMPANY	~\$700+M	Nickel	Ni Crawford Nickel District	Canada	Development
FPX NICKEL CORP.	~\$250+M	Nickel	Ni Baptiste Nickel Project	Canada	PEA / Development
FIRST ATLANTIC NICKEL CORP.	~\$40 – 60M	Nickel	Ni Newfoundland District	Canada	Exploration

*Enterprise Value (EV) figures are approximate and subject to change. Please refer to latest market data.

ENTERPRISE VALUE (EV) COMPARISON (US\$M)



GEMC trades at a substantial discount despite diversified exposure across six critical mineral supply chains and multiple royalty/partnership structures.

DIVERSIFICATION SCORECARD

	GEMC
Battery Metals Exposure	✓
Uranium Exposure	✓
Royalty Exposure	✓
Strategic Investments	✓
Partner-Funded Assets	✓
Multiple Jurisdictions	✓
Multiple Monetization Paths	✓

PROJECT GENERATOR MODEL



Disciplined cycle drives value creation and shareholder returns.

WHY GEMC STANDS APART

Unlike most peers that are single-asset, single-commodity developers, Global Energy Metals offers shareholders diversified exposure to nickel, copper, cobalt, lithium, uranium, graphite and silver through a portfolio of strategic partnerships, royalties, project interests and equity investments spanning four Tier-1 jurisdictions.



ROYALTY EXPOSURE

- Råna Nickel Project (Norway)
- Mt Isa Projects (Australia)
- Monument Peak Project (USA)
- Peace River Lithium Project (Canada)
- Athabasca Uranium Portfolio (Canada)

STRATEGIC OPTIONALITY

- ✓ Equity investments in high-quality assets
- ✓ Royalty generation across multiple commodities
- ✓ Partner-funded advancement reduces dilution
- ✓ Exposure to multiple critical mineral cycles
- ✓ Multiple monetization pathways create flexibility
- ✓ Strong balance sheet optionality

ESG & SUSTAINABILITY

Building a Responsible, Sustainable and Resilient Critical Minerals Platform

Institutional ESG Scorecard



ENVIRONMENTAL

Minimizing Impact. Maximizing Resource Efficiency.



LOWER-CARBON METALS

Focused on critical minerals essential for the clean energy transition, including nickel, copper, lithium, uranium, graphite and silver.



PROJECT PARTNERSHIPS

Partnering with industry leaders to advance projects responsibly, share expertise and reduce environmental footprint.



RESPONSIBLE DEVELOPMENT

Applying best practices in exploration and project advancement to protect biodiversity, land and water resources across all jurisdictions.

KEY METRICS



LOWER-CARBON FOCUS
High



RESOURCE EFFICIENCY
High



ENVIRONMENTAL STEWARDSHIP
High



BIODIVERSITY CONSIDERATION
High



SOCIAL

People. Communities. Shared Value.



LOCAL STAKEHOLDERS

Building strong relationships with local stakeholders, Indigenous groups and governments to foster trust and transparency.



COMMUNITY ENGAGEMENT

Committed to meaningful engagement, local employment opportunities and supporting community initiatives.

KEY METRICS



STAKEHOLDER ENGAGEMENT
High



LOCAL CONTENT & EMPLOYMENT
High



HEALTH & SAFETY FOCUS
High



COMMUNITY INVESTMENT
High



GOVERNANCE

Strong Oversight. Disciplined Leadership.



INDEPENDENT DIRECTORS

Majority independents Board with diverse backgrounds, ensuring unbiased oversight and strong corporate governance.



BOARD EXPERIENCE

Deep expertise in capital markets, mining, finance, sustainability and corporate development to drive long-term value.

KEY METRICS



BOARD INDEPENDENCE
High



BOARD SKILLS & EXPERIENCE
High



ETHICS & TRANSPARENCY
High



RISK MANAGEMENT
High

KEY HIGHLIGHTS

- ✓ Focused on enabling the clean energy transition
- ✓ Responsible exploration and development practices
- ✓ Strong partnerships to de-risk and create shared value
- ✓ Engaging with stakeholders and communities
- ✓ Committed to high standards of governance and transparency



ADVANCING CRITICAL MINERALS FOR A SUSTAINABLE FUTURE

GEMC is committed to creating long-term value by developing critical minerals responsibly, investing in communities, and maintaining the highest standards of governance.

SUSTAINABILITY ALIGNMENT



SUPPORTING THE ENERGY TRANSITION



RESPONSIBLE RESOURCE MANAGEMENT



STRONG COMMUNITIES



RESPONSIBLE GOVERNANCE

Aligned with global ESG frameworks and best practice standards

LEADERSHIP TEAM

Experienced Leaders. Proven Track Record. Creating Long-Term Value.



Mitchell Smith

President & CEO, Director



Luis Hadic

CFO



Timothy Strong

Project Development Strategic Advisor



Jaime Stallwood

Corporate Development



Paul Sarjeant

QP & Director



Accomplished executive & business development professional with deep experience



Executing corporate strategies, marketing relationships & opportunities for long term engagement.



+10 years of accounting experience across various sectors including, technology, mining and manufacturing



Expertise focusing on financial reporting, regulatory compliance, internal control & corporate finance activities.



Tim is an exploration professional with over 10 years experience who's wealth of exploration and resource geology experience positions Tim to partake in all levels of the exploration value chain, from project generation through to resource definition.



30 years entrepreneurial experience managing companies from early stage development to multi-million dollar NASDAQ listed companies on both the operations and corporate levels.



Extensive exploration, project evaluation and acquisition



experience both in Canada and internationally and



has managed several junior resource companies.

BOARD OF DIRECTORS

Deep Industry Expertise Across Critical Minerals, Capital Markets & Global Project Development



DIRECTOR	POSITION	MINING	TECHNICAL	FINANCE	M&A	CAPITAL MARKETS	ESG	GOVERNMENT RELATIONS	OFFTAKE & TRADING
Mitchell Smith	President & CEO, Director	● ● ○	● ● ○	● ● ●	● ● ●	● ● ●	● ● ●	● ● ○	● ● ●
Erin Campbell	Executive Director	● ● ○	● ○ ○	● ● ●	● ● ●	● ● ●	● ● ○	● ● ●	● ● ○
Paul Sarjeant, P.Geo.	Director & QP	● ● ●	● ● ●	● ● ○	● ● ○	● ○ ○	● ● ○	● ● ●	● ○ ○
Gaston Reymenants	Director	● ● ●	● ● ○	● ● ●	● ● ○	● ○ ○	● ● ○	● ● ○	● ● ●

● ● ● Core Expertise
 ● ● ○ Strong Experience
 ● ○ ○ Working Knowledge

MITCHELL SMITH

President & CEO, Director

- Founder of Global Energy Metals
- 15+ years mining & capital markets experience
- Battery Metals Association of Canada Director
- Global project sourcing, partnerships & off-take expertise

ERIN CAMPBELL

Executive Director

- Infrastructure and project finance specialist
- Capital markets and strategic transactions
- Government and institutional financing experience
- Public company governance expertise

PAUL SARJEANT, P.GEO.

Director & Qualified Person

- International exploration geologist
- Resource development and technical oversight
- Project evaluation and acquisitions
- Extensive global operating experience

GASTON REYMENTANTS

Director

- 40+ years mining, refining and metal trading
- Falconbridge International executive
- Offtake, smelting and strategic financing expertise
- Global critical minerals market relationships

BOARD HIGHLIGHTS

- 100+ Years Combined Industry Experience
- Global Mining, Refining & Trading Expertise
- Significant Capital Markets & Financing Experience
- Technical Oversight Across Multiple Jurisdictions
- Critical Minerals Supply Chain Expertise
- Proven Track Record of Value Creation Through Partnerships & Monetization

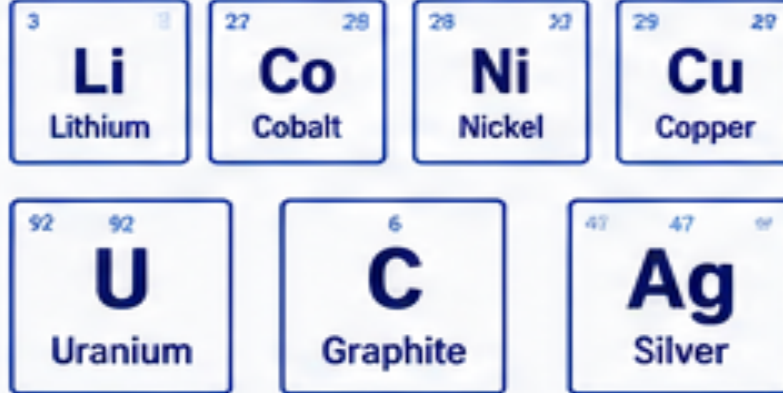
INVESTMENT SUMMARY

FIVE REASONS TO OWN GEMC TODAY



GLOBAL
ENERGY
METALS
CORP.

1



DIVERSIFIED CRITICAL MINERALS EXPOSURE

Exposure to high-demand battery and energy metals including lithium, cobalt, nickel, copper, uranium, graphite, silver and more through a diversified portfolio of strategic assets.

2



MULTIPLE PATHS TO VALUE CREATION

A unique project generator and royalty model with multiple catalysts across exploration, development, partnerships and monetization.

3



STRATEGIC PARTNERSHIPS

Strong relationships with leading industry participants across the battery supply chain, enabling access to capital, technical expertise and off-take opportunities.

4



TIER-1 JURISDICTIONS

Portfolio of projects in safe, stable and mining-friendly jurisdictions across North America, Europe and Australia, reducing risk and enhancing long-term value.

5



COMPELLING RE-RATING POTENTIAL

Strong leverage to rising battery metals demand and a compelling value proposition with significant upside as assets advance and partnerships deliver results.

POSITIONED TODAY. DELIVERING TOMORROW.

DIVERSIFIED EXPOSURE. MULTIPLE CATALYSTS.
DISCIPLINED CAPITAL ALLOCATION.



LITHIUM

COBALT

NICKEL

COPPER

URANIUM

GRAPHITE

SILVER



**GLOBAL
ENERGY
METALS
CORP.**

CONTACT



Global Energy Metals Corporation



TSXV: [GEMC](#) | OTC: [GBLEF](#)



info@globalenergymetals.com



www.globalenergymetals.com



**ADVANCING CRITICAL MINERALS
FOR A SUSTAINABLE FUTURE**



TSXV: [GEMC](#) | OTC: [GBLEF](#)

DIVERSIFIED EXPOSURE. MULTIPLE CATALYSTS. DISCIPLINED CAPITAL ALLOCATION.

www.globalenergymetals.com