



**RESOURCE
MANAGEMENT**



Monument Peak Project, ID

Strata-bound Copper, Silver (+/- Gold)

Summary

DGRM

- DG Resource Management Ltd. (DGRM) is a Canadian based, private, project generator, with a head office in Edmonton, AB.
- Management at DGRM has a successful **track record of exploration discovery across multiple commodities**: Lithium, Uranium, REE's and Rare Metals, Industrial Commodities, Gold.
- DGRM and GEMC jointly hold 100% in the Monument Peak, ID Project.

Property

Jackson Mine (Cu, Ag, Au)

- High grade, near surface, samples from 1-3 % Cu, 90+ g/t Ag, to ½ oz/t Au (Mitchell, 1972). Samples to **13.6% Cu and 2,359 g/t Ag**.
- Mineralized trend with “unusual continuity”, 3000 +m strike, 3 - 6+ m thick

Anderson Occurrence (Cu, Ag, Au)

- South end of Monument Trend
- USGS Grab Sample: 1.7% Cu, 22 g/t Ag and 0.16 g/t Au.

Opportunity

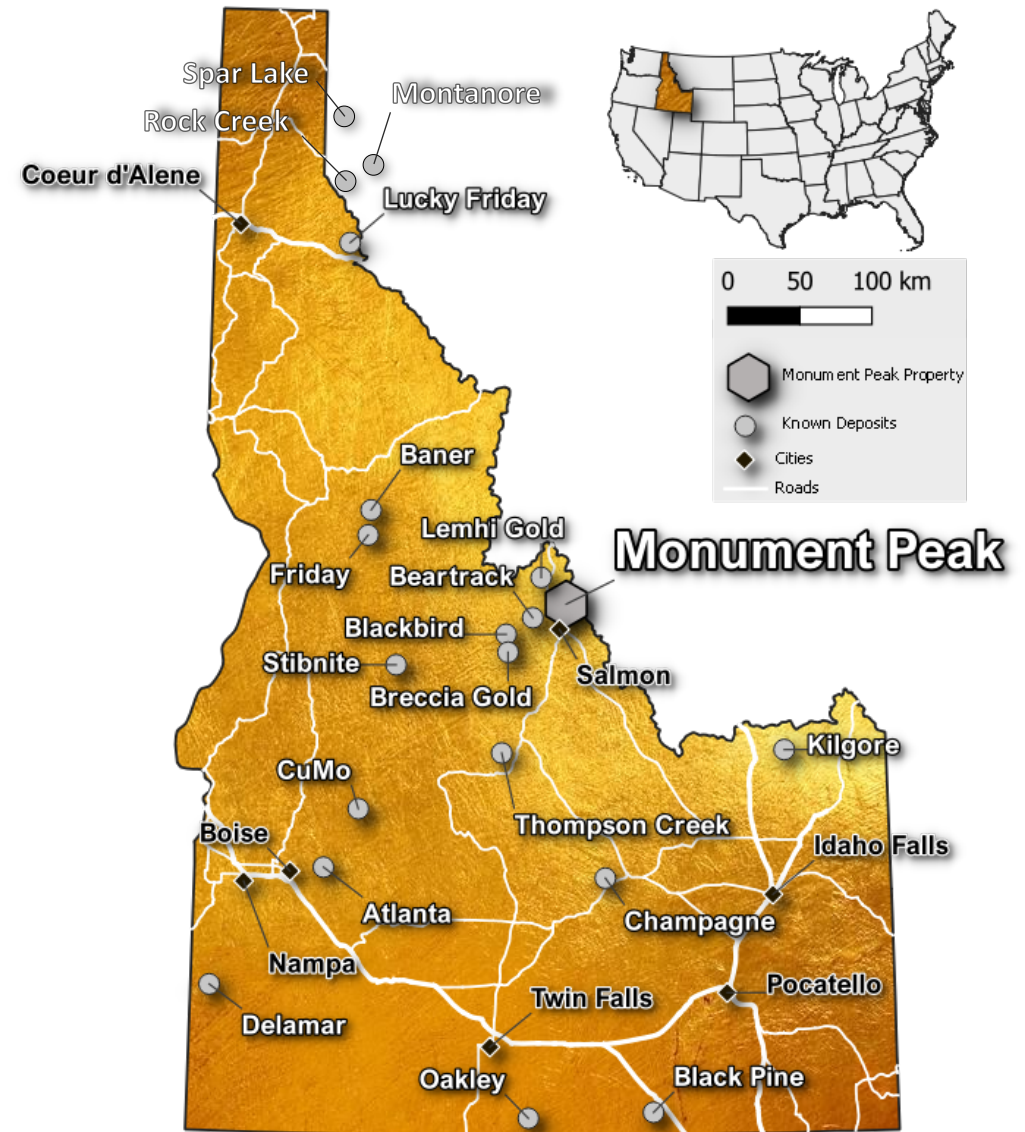
- Road accessible with 84 claims totaling 1,708 acres (~691 hectares).
- Located on BLM lands, where rapid permitting for drilling is possible.
- **Stratabound Copper-Silver Deposit** similar to Hecla's Rock Creek and Montanore deposits of northwest Montana.
- “Unusual continuity” suggests **large tonnage potential**, with demonstrated high grades of Cu, Ag +/- Au.



Idaho USA

The Monument Peak Property is located within Lemhi County, Idaho

- The 2021 Fraser Institute Annual Survey of Mining Companies ranked **Idaho in 7th place worldwide** on the investment attractiveness index.
- The US DOE “**2023 Final Critical Materials**” included both critical materials for energy and critical minerals. This allows the DOE to invest across the entire research continuum and supply chain for critical materials.
- Critical materials for energy: aluminum, cobalt, **copper**, dysprosium, electrical steel, fluorine, gallium, iridium, lithium, magnesium, natural graphite, neodymium, nickel, platinum, praseodymium, silicon, silicon carbide and terbium.



Sedimentary Cu Idaho/Montana

Spar Lake, Montana

- Earliest exploration in area occurred in the 1920s and 30s
- Bear Creek Mining found Spar Lake (Troy), Rock Creek and Montanore
- Hosted by Revett Fm quartzites
- Troy deposited delineated in 1964-67, mined from 1981 to 1993
- **58 Mt @ 0.76% Cu, 54 g/t Ag**

Rock Creek, Montana

- Hosted by the Middle Proterozoic Revette FM, northwest Montana
- **123.4 Mt @ 0.77% Cu, 57.2 g/t Ag (Revett Mining, 2013)**

Montanore, Montana

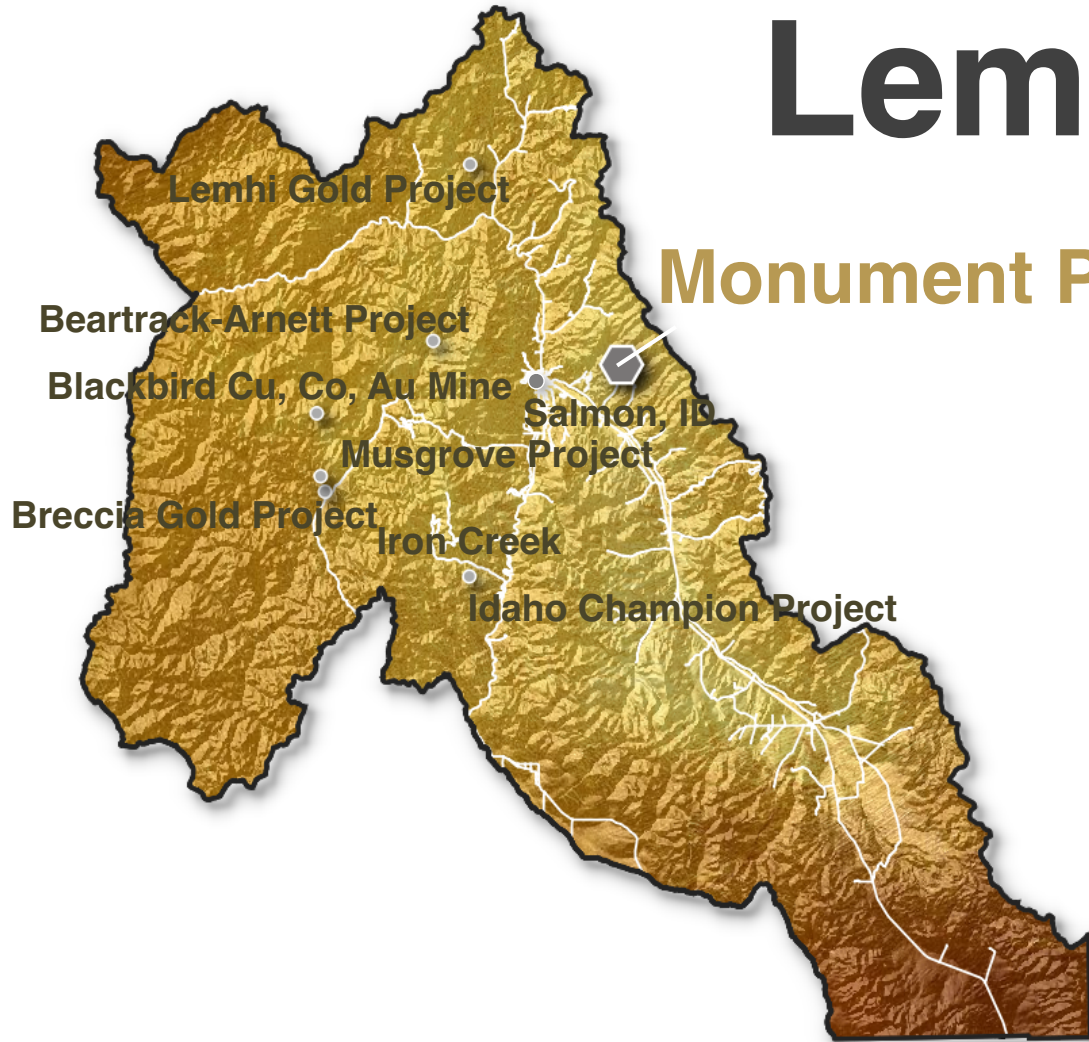
- Discovered/explored by Borax in 1983
- Drilling from 1983 – 1987
- **116.6 Mt @ 0.74% Cu, 56.9 g/t Ag (Sanders, 1994)**
- Bulk of deposit located in Cabinet Mountain Wilderness. Surface exploration now prohibited

Hercules Silver Corp., Idaho

- Porphyry discover (not sedimentary)
- **Hercules Silver Corp. (Oct 10, 2023) announced 185 m of 0.84% Cu and 2.6 g/t Ag at their Hercules Project**
- Hercules believes this to be a newly discovered porphyry system
- Located northwest of Cambridge, Idaho



Lemhi County Idaho



Monument Peak

- The Monument Peak Property is approximately 15 km east of Salmon, ID, along a well-maintained gravel road
- It is within a major metallogenic province associated with the Trans-Challis Fault system; with a long history of both hard-rock and placer gold mining
- Lemhi County is host to numerous base and precious metal deposits within close proximity to the project, including:
 - Revival Gold Beartrack-Arnett Project
 - Historic Production of 607,500 oz. Au
 - Freeman Gold Lemhi Gold Project
 - Historic Resource (2013) of 569,631 oz. Au indicated and 268,959 oz. Au inferred
 - **Idaho Cobalt Belt** (First Cobalt, Jervois Mining)

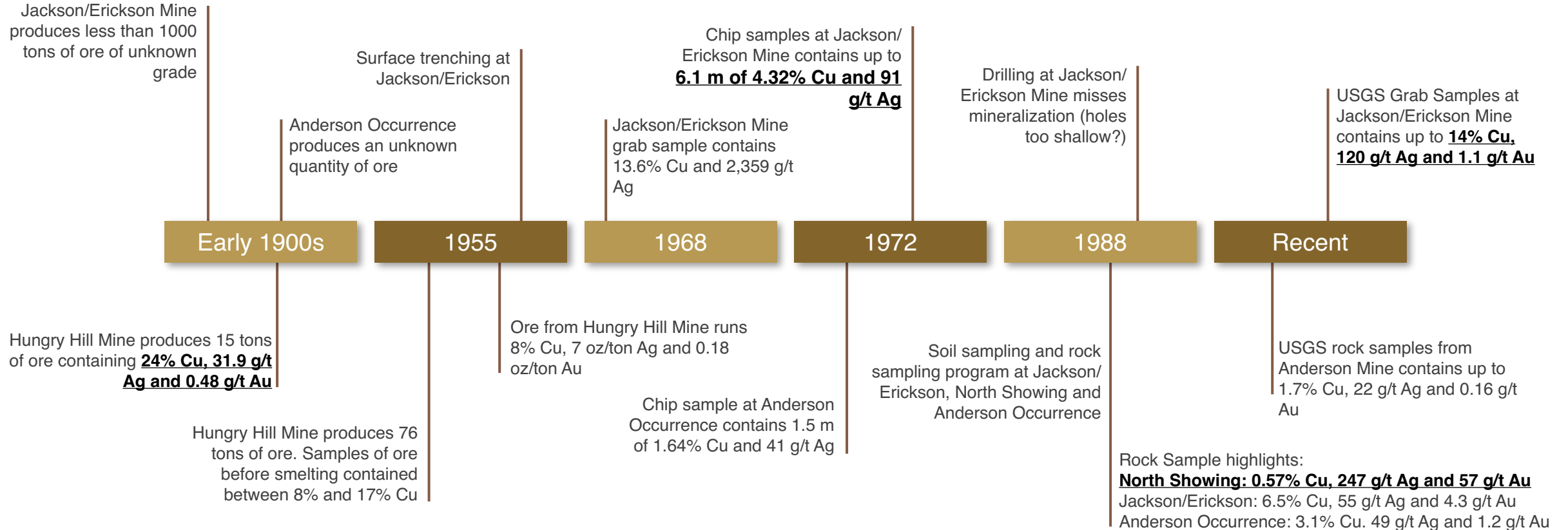


Monument Peak

- The Monument Peak Project consists of 65 claims totaling 1300 acres at Jackson and 4 claims totaling 80 acres at Hungry Hill.
- It is located on Geertson Creek, within 1 km of Kirtly and Bohannon creeks, where placer operations resulted in **39,699 oz Au and 4,007 oz of Ag from 1901 to 1918.**
- The property **encompasses two small, past producing Cu-Ag-Au mines: the Jackson Mine and the Hungry Hill Mine;** plus the Anderson Mineral occurrence and North Showing.
- At the Hungry Hill Mine, about 1 km east of the Jackson Mine, a small amount of production (15 tons) reportedly contained **24% Cu, 0.93 oz/ton Ag and 0.014 oz/ton Au.** This mine contained a zone of 17% Cu across 2.4 m of ‘mineralized rock’ including 14 inches of solid bornite.
- **Entirely on BLM lands, permitting of exploration work is expected to be simple, with year-round access on public roads.**



Property History



Historical Highlights

Jackson Adit (1968)

- Grab Sample: **13.6% Cu and 2359 g/t Ag**

Sampling of historic workings and trenching samples (1972)

- Chip Sample: **3.0 m of 7.03% Cu and 99 g/t Ag**
- Chip Sample: **1.8 m of 3.11 % Cu and 93 g/t Ag**
- Chip Sample: **6.1 m of 4.32 % Cu and 91 g/t Ag**

USGS Rock Sample Database

- Grab Sample: **6.5% Cu 43 g/t Ag and 0.48 g/t Au**
- Grab Sample: **14% Cu, 120 g/t Ag and 1.1 g/t Au**

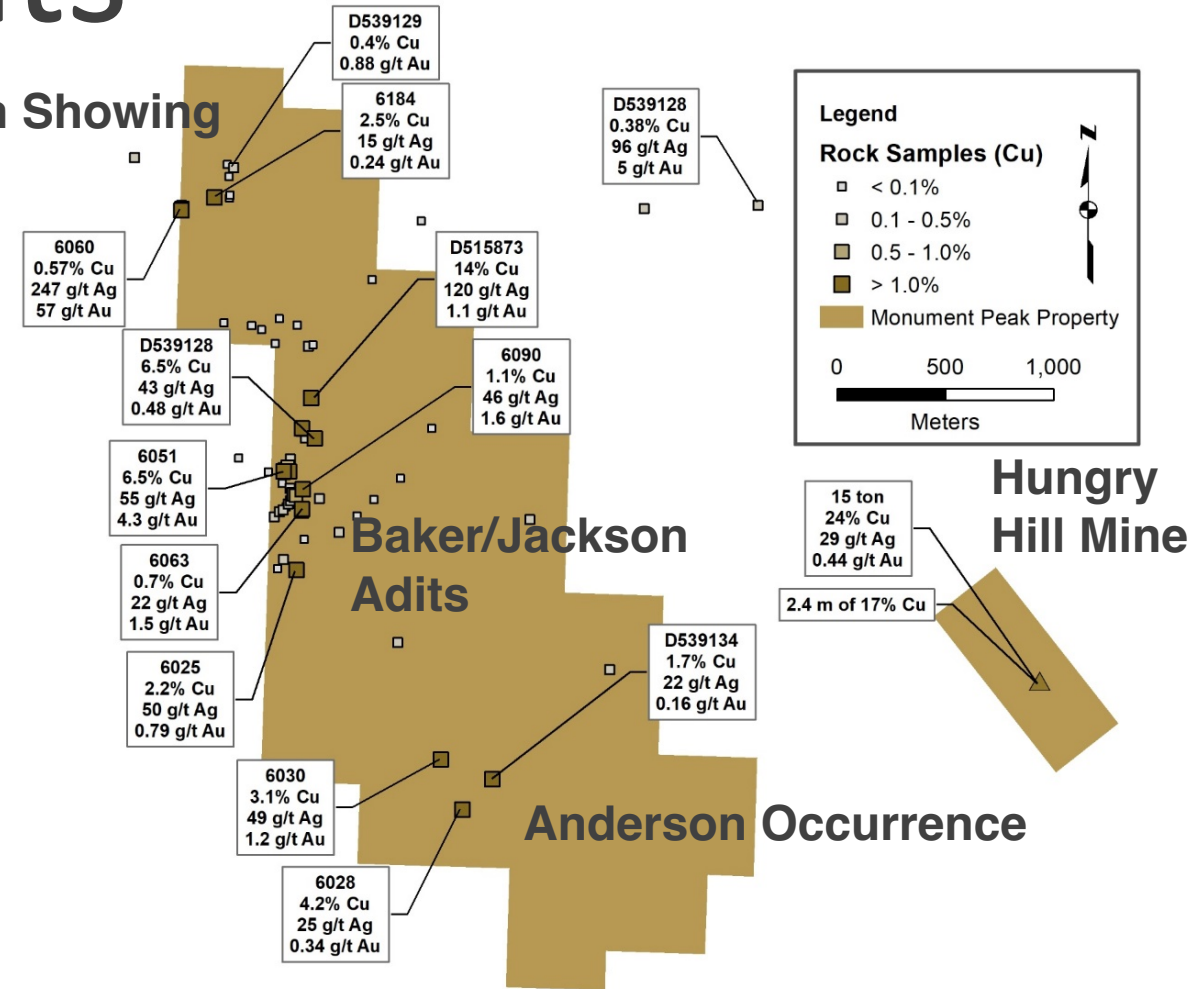
Sampling of historic workings and trenching samples (1972)

- Chip Sample: **1.5 m of 1.64 % Cu and 41 g/t Ag**

USGS Rock Sample Database

- Grab Sample: **1.7% Cu, 22 g/t Ag and 0.16 g/t Au**

North Showing



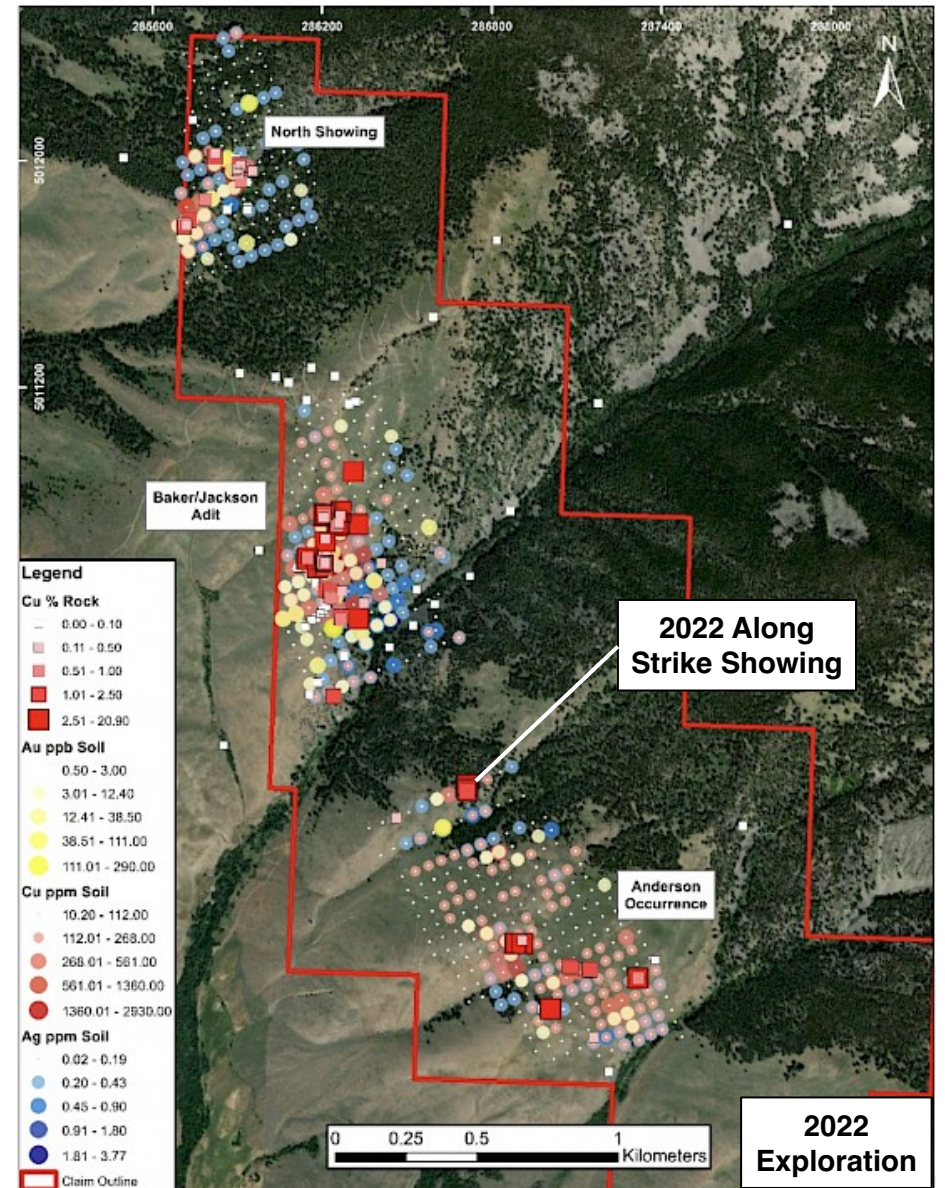
Baker/Jackson Mine

Anderson Occurrence



Mineralization

- The mineralized trend extends over **3.2 km strike** with “**unusual continuity**” (Mitchell, 1972). It is about 3 m (10 feet) thick and locally up to 6.1 m (20 feet).
- Copper mineralization consists of chalcopyrite, chalcocite, bornite, malachite, azurite, chrysocolla with minor tenorite. Some limonite and pyrite are reported.
- Most samples from Monument Peak contained at least a trace of gold to a maximum of 57 g/t Au. **Silver values are quite consistent with most mineralized samples containing an average of nearly 3 oz/t Ag (Mitchell, 1972).**
- At the Anderson Occurrence near surface mineralization is oxidized with malachite, +/- chrysocolla and azurite.
- **2022 Exploration confirmed the presence of mineralization and delineated new anomalies and showings along strike**



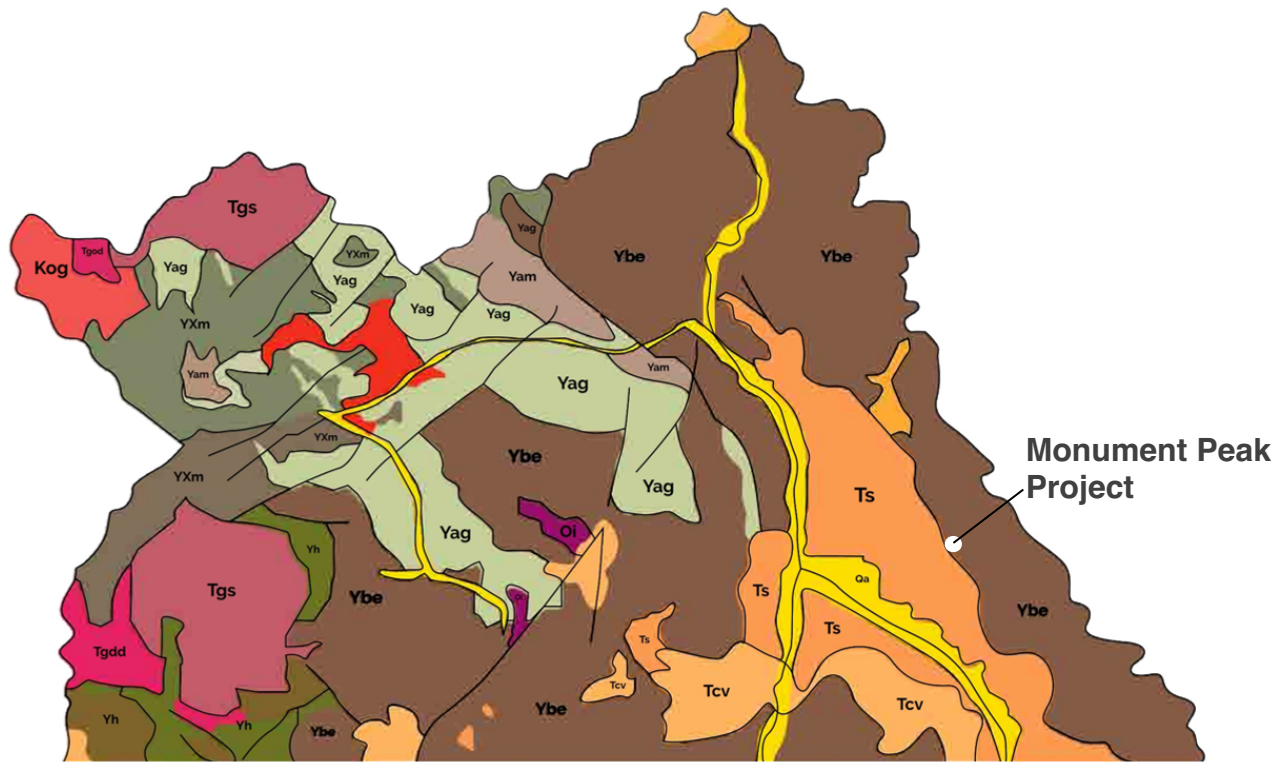
Geology

Monument Peak

The Property is underlain by quartzites and phyllites of the Mesoproterozoic Gunsight Formation

Mineralization occurs along a shear zone or other plane of weakness, with a strike length of up to three kilometres. The mineralized trend has an approximate NW–SE strike and dips from 35° to 55° SW

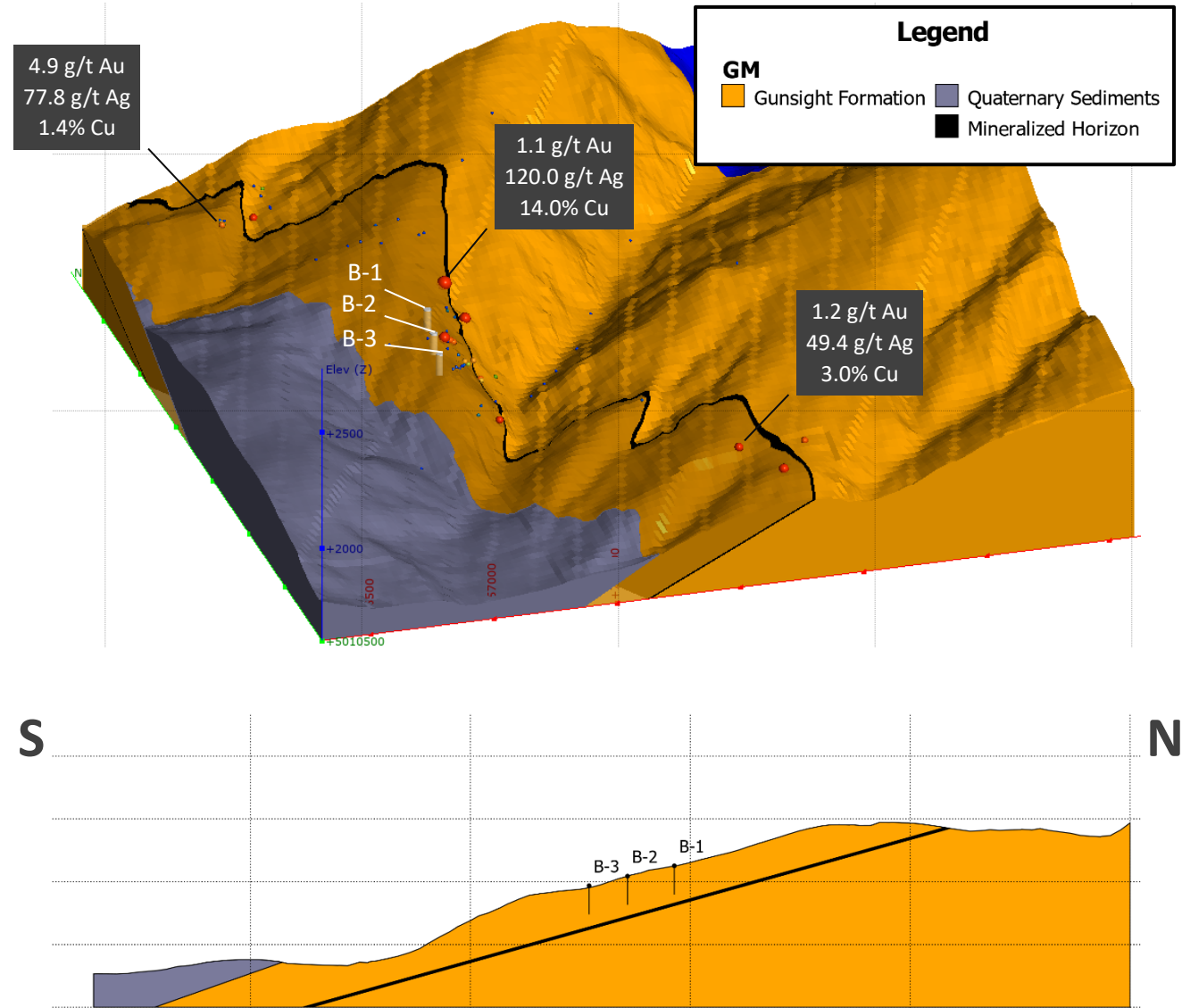
The zone occurs along bare open ridge slopes that may be favourable for surface mining



Qa	Quaternary alluvial deposits	Oi	Ordovician intrusive rocks (includes Beaverbead pluton)
Tgs	Eocene granite, pink granite, syenite, rhyolite dikes, and rhyolitic shallow intrusive	Ybe	Belt Supergroup and related rocks (includes Meadow Creek metamorphic sequence)
Tgdd	Eocene granodiorite, granite, diorite, and shallow dacitic intrusive	Yam	Mesoproterozoic amphibolite
Ts	Tertiary sedimentary rocks, undifferentiated	Yag	Mesoproterozoic augen gneiss and porphyritic granite
Tcv	Eocene Challis Volcanic Group, volcanics and volcanoclastics	Yh	Hoodoo Quartzite
Kog	Cretaceous orthogneiss, and foliated granodiorite and granite		

Historical Drilling

- In 1989 three vertical RC holes, each 300' in length, were drilled west of the historical Baker/Jackson Mine trend.
- The holes did not intersect the known high grades of Cu-Ag-Au mineralization at surface. Though 2 of the 3 holes returned elevated Cu (+/- Au) from samples near the bottom of the holes.
- Based on reported dips of 35° to 55°W (Mitchell, 1972) for the mineralized trend and using historic surface and drill data, a 3D Geological Model was completed.
- When using the shallowest reported dip of 35°, it is clear the 1989 drill holes may have been too shallow to have intersected the mineralization.

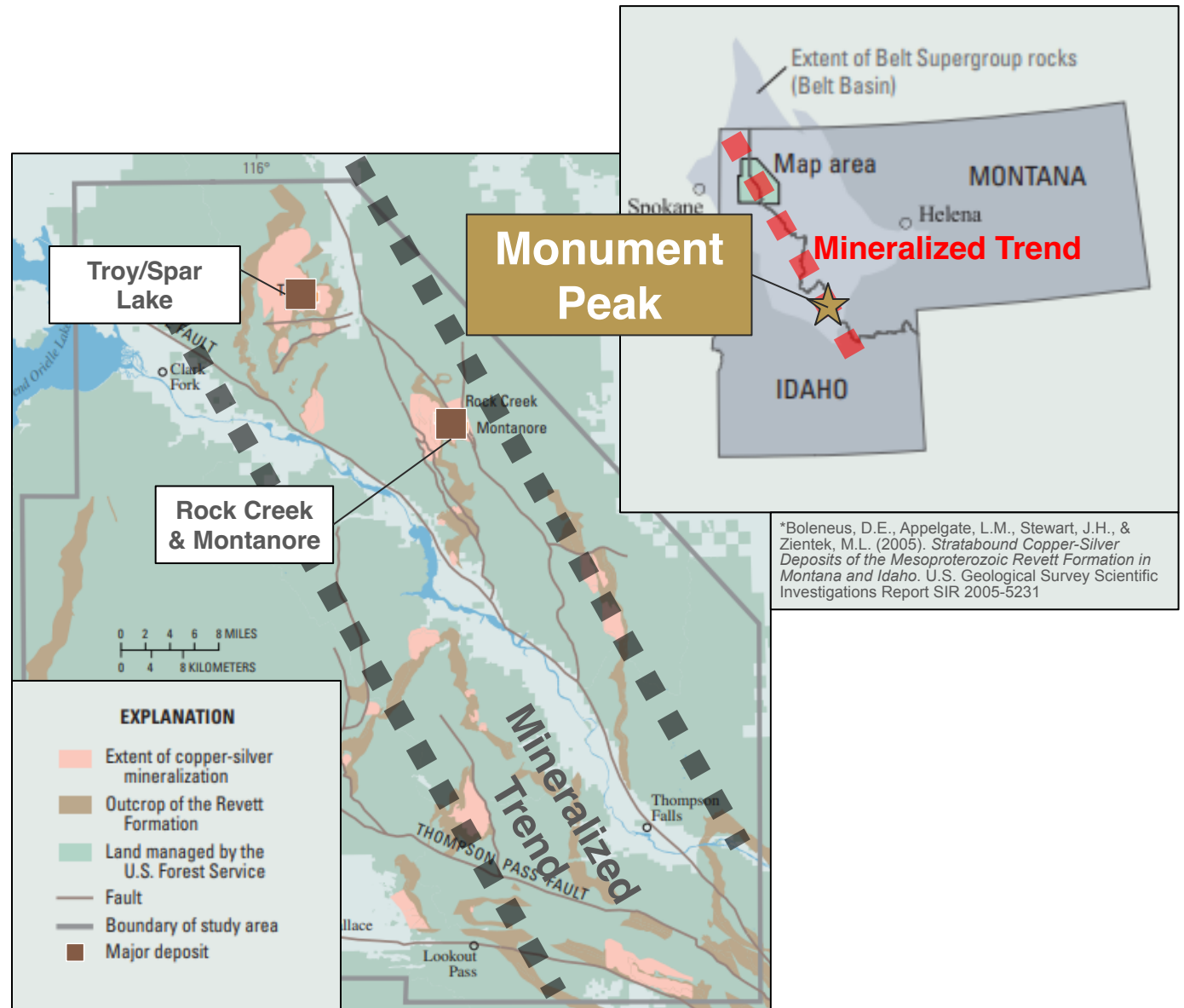


Deposit Type

- The western Montana Copper Belt, which extends into northwestern Idaho is host to several large strata-bound copper-silver deposits.
- Economic copper mineralization is hosted within the white- to grey-, fine- to medium-grained quartzites and sandstones of the Revett Formation (1.401-1.407 Billion years).
- Three significant deposits are known: **Spar Lake (Troy), Rock Creek, and Montanore.**
 - Rock Creek contains an inferred resource^[1] of
 - 100 Mt of 0.7% Cu and 1.5 oz/ton Ag
 - Montanore contains an inferred resource^[1] of
 - 112 Mt of 0.7% Cu and 1.6 oz/ton Ag
 - Spar Lake contains ^[2]
 - 81 Mt of 0.63% Cu

[1] Hecla Mining Company

[2] USGS



Deposit Type

- Monument Peak hosts a similar style of mineralization as the large strata-bound, sedimentary copper-silver deposits of the Revett Fm.
 - Revett Formation (1470-1400 Ma), Northwest Montana
 - Gunsight Formation (1450 +/- 20 Ma), East-central Idaho

- At Spar Lake:

“The main Spar Lake orebody is flat lying to gently dipping with an average thickness of 21 m and lateral dimensions of 2300 x 500 m. Its margins and mineralogical zone boundaries (ore, sub ore and gangue) are elongated parallel to the East Fault. Underground the East Fault is up to 10 m thick and variably mineralised with anastomosing 25 to 50 cm thick zones of gouge containing high grade veins (chalcocite-clay, quartz-Cu sulphide veins) in places while at others it is barren.” (Portergeo.com.au, 2023)



Conclusions

- Larvery, 1988 concluded that

“ The most reasonable model for the gold mineralization ... is as follows: Syngenetic copper (and some gold and silver) mineralization was deposited with felsic volcanic rocks and cherty sediments in a restricted basing during deposition of the Yellowjacket Formation.”

- Regardless of deposit type the ‘initial’ exploration target appears to be relatively simple:
 - **Geometry with 3,200+ m strike, 3 to 6+ m thick, *down dip extent* (requires testing)**
 - Unusual continuity (Mitchell, 1972)
 - Metal assemblage enriched in Cu, Ag, Au (+/- Pb, Zn ?) with potential for very high grades
- Host lithologies, age, mineralogy, and chemistry are strongly indicative of Revett Fm stratabound sedimentary Cu-Ag deposits



GLOBAL
ENERGY
METALS
CORP

DG RESOURCE MANAGEMENT



Suite 103, 10183 – 112 Street
Edmonton, AB T5K 1M1
Tel: 780-434-9808

www.dgrm.com

Jody Dahrouge
Email: jody@dahrouge.com

Mitchell Smith
Email: msmith@globalenergymetals.com

